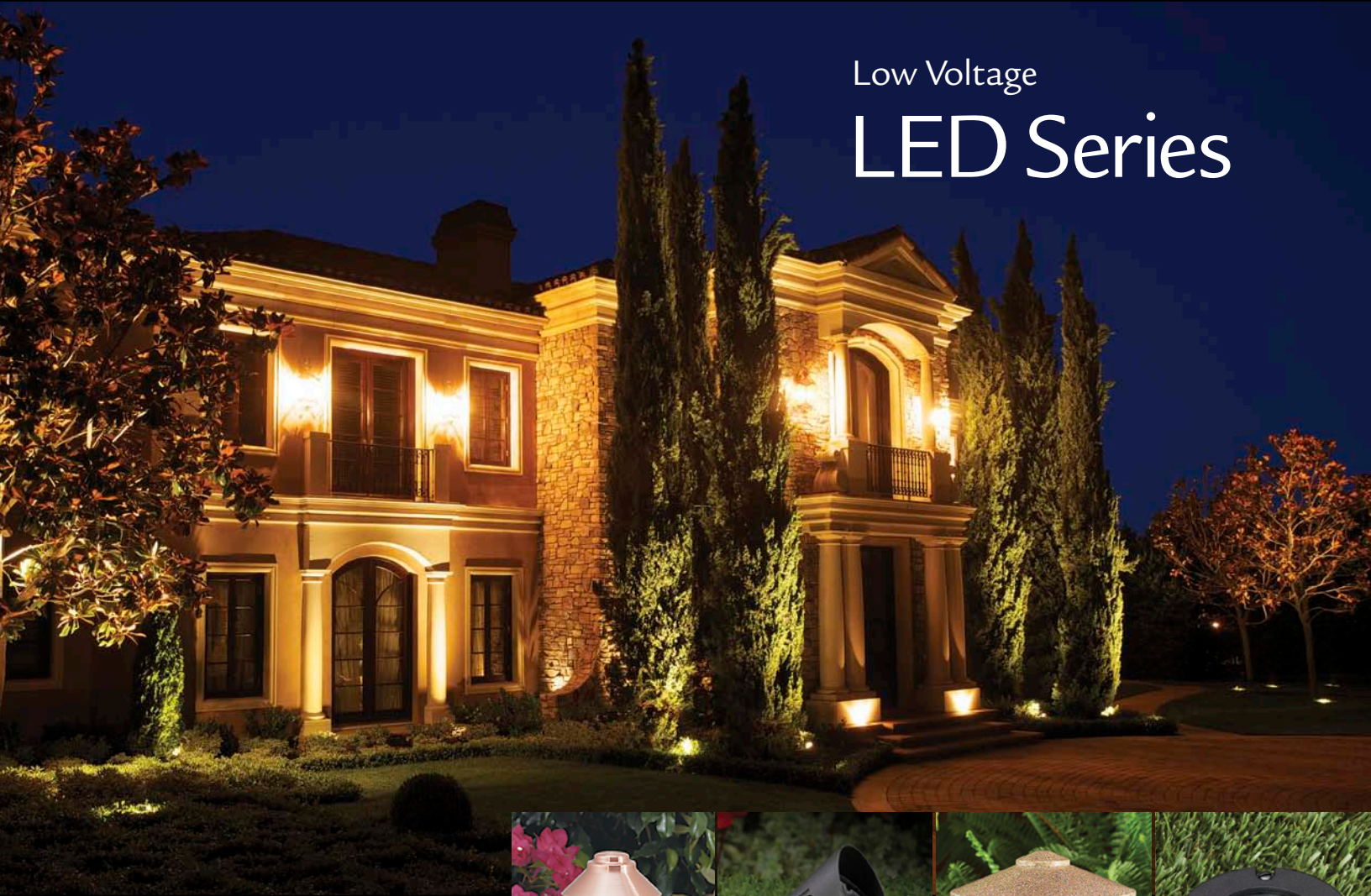




**VISTA  
PROFESSIONAL  
OUTDOOR  
LIGHTING**



Low Voltage

# LED Series



100%  
American  
Made

Largest  
Selection in  
Industry

Serviceable  
Modular  
Design

Built to  
Your  
Specification

Today's consumers demand products that are energy-efficient and that will stand the test of time. With Vista's American-made LED technology you get beautiful, sustainable lighting solutions that utilize energy efficiently and responsibly.

**KEY FEATURES OF VISTA LED PRODUCTS:**



- **REMARKABLE ENERGY EFFICIENCY**  
up to 70% reduction in energy use vs. traditional incandescent.  
Good for your pocket book – and the planet.
- **EYE-APPEALING LIGHT**  
warmer, brighter light that aims precisely without glare.
- **PROFESSIONAL-GRADE**  
fixtures that are affordable for any project and that stand up to the rigors of outdoor environments.



- **QUALITY, DESIGNED AND BUILT IN AMERICA**  
no shortcuts or seconds. Top-tier materials, lenses, electronics backed by an outstanding warranty.
- **THE BROADEST SELECTION**  
of fixture styles for every application. Accent, path, hardscape, in-ground, underwater, specialty and more.



- **FULLY CUSTOMIZABLE**  
including 15 standard powder-coated designer finishes, plus brass, copper and stainless steel.
- **24-HOUR TURNAROUND,**  
each fixture custom built to your order.

This brochure presents only a small selection of the rapidly growing Vista line of sustainable lighting solutions. To browse more styles and options, visit our web site at [www.VistaPro.com](http://www.VistaPro.com)

## ANATOMY OF A QUALITY LED FIXTURE

Sustainable Design for Energy Efficiency & Maximum Longevity

### ADVANCED OPTICS

*Light Where You Want It, Without Glare*

Vista engineers use advanced software called Photopia™ to fine tune light distribution, creating precise beams without the need for additional reflectors and shrouds.

### EYE-APPEALING LIGHT

*Warm, Bright, Consistent, Color-Enhancing*

Top-grade LED emitters give Vista's LED products a distinguishable difference: warmer, brighter light that rivals the finest halogen reflector lamps, while using 70% less energy.

### MODULAR SERVICEABILITY

*A Sustainable Approach to Fixture Design*

Vista puts an end to “disposable fixtures” with fully field-serviceable designs that incorporate replaceable parts. If a fixture is damaged by a lawn mower, parts can be changed rather than throwing the entire unit away.

### NO CUTTING CORNERS

*Heavy-Duty, Professional Grade Construction*

With LED, the design of the fixture must match the longevity (15+ years) of the LED light engine. Vista never skimps on the thickness of the housing, the water-tight seals or the adjustable knuckle. And our heat-management technology is second to none.

### TRUE-TO-SPEC PERFORMANCE

*Independently Tested & Verified*

Manufacturers make a lot of claims. Whose data do you trust? With Vista, you get honest performance information based on total system watts. Access the latest LM-79 and IES files right on our web site.



- 1 **HEAVY-DUTY KNUCKLE** – maximum adjustment, resists impacts
- 2 **DUAL SEALS**– prevent water entry, allow mounting in any position
- 3 **MODULAR DRIVER** – field replaceable, convenient quick connects
- 4 **EXTRA-THICK HOUSING** – rugged for long life in abusive environments
- 5 **HEAT MANAGEMENT SYSTEM** – preserves life of driver and emitters
- 6 **LED ARRAY** – eye-appealing light from long life emitters
- 7 **ENGINEERED TIR OPTIC** – perfected with Photopia®, guarantees precise beam control without glare
- 8 **HIGH IMPACT LENS** – fully sealed, resists maintenance damage

## Up and Accent Fixtures



**3003** | Die-cast aluminum  
**3006** | Group F 5W, 10W, 17W  
**3009** | Spot, medium flood or wide flood



**3013** | Die-cast aluminum  
**3016** | Group F 5W, 10W, 17W  
**3019** | Spot, medium flood or wide flood



**3316** | Die-cast aluminum  
 Group A 5W  
 Spot, medium flood or wide flood



**5103** | Die-cast aluminum  
 Group B 2.5W or 5W



**5203** | Composite  
 Group B 2.5W or 5W



**5212** | Die-cast aluminum  
 Group B 2.5W or 5W

### ONLY VISTA'S LED PRODUCTS GIVE YOU:

- A beautifully-lit landscape environment with warm light that enhances natural features.
- The latest technology to dramatically lower operating costs (save 70% or more).
- Reduced maintenance with freedom from replacing light bulbs.
- Customizable fixtures and finishes to match your taste and preferences.
- The best warranty in the business.



**7218** | Die-cast aluminum  
 Group B 2.5W or 5W



**2205** Die-cast aluminum  
Group B 2.5W or 5W



**2207** Die-cast aluminum  
Group B 2.5W or 5W



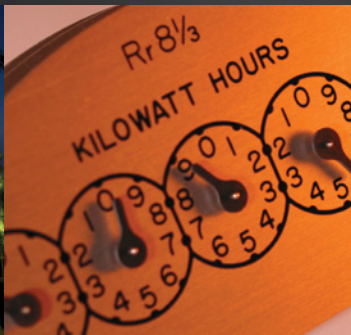
**2212** Die-cast aluminum  
Group B 2.5W or 5W

## A FUNDAMENTAL COMMITMENT TO RESPONSIBILITY

Backed by a growing movement to “go green”, energy efficient technology is transforming the architectural and landscape lighting market.

Through the application of new technology like LED and other high-efficiency light sources, advanced optics and smart controls, Vista is leading the way with new solutions that offer long life, energy efficiency, durability, and flexibility.

As part of our company-wide “Vista Green” initiative, we’re also revolutionizing our own business practices to reduce waste and energy consumption with an overall philosophy of conservation and environmental responsibility.



Path and Spread Fixtures



**4202** Die-Cast Aluminum  
 Group B 2.5W or 5W



**4203** Die-Cast Aluminum  
 Group B 2.5W or 5W



**4206** Die-Cast Aluminum  
 Group B 2.5W or 5W



**4207** Die-Cast Aluminum  
 Group B 2.5W or 5W



**4207** Die-Cast Aluminum  
 Group B 2.5W or 5W



**4211** Die-Cast Aluminum  
 Group B 2.5W or 5W



**4704** Die-Cast Aluminum  
 Group B 2.5W or 5W



**5202** Die-Cast Aluminum  
 Group B 2.5W or 5W



**6216** Die-Cast Aluminum  
 Group B 2.5W or 5W



**6222** Die-Cast Aluminum  
Group B 2.5W or 5W



**6223** Die-Cast Aluminum  
Group B 2.5W or 5W



**6500** Die-Cast Aluminum  
Group B 2.5W or 5W



**6502** Die-Cast Aluminum  
Group B 2.5W or 5W



**6558** Die-Cast Aluminum  
Group B 2.5W or 5W



**7206** Die-Cast Aluminum  
Group B 2.5W or 5W



**7216** Die-Cast Aluminum  
Group B 2.5W or 5W



**7223** Die-Cast Aluminum  
Group B 2.5W or 5W



**9202** Die-Cast Aluminum  
Group B 2.5W or 5W

Path and Spread Fixtures



**9206**

Die-Cast Aluminum  
 Group B 2.5W or 5W



**9207**

Die-Cast Aluminum  
 Group B 2.5W or 5W



**9211**

Die-Cast Aluminum  
 Group B 2.5W or 5W



**9215**

Die-Cast Aluminum  
 Group B 2.5W or 5W



**9216**

Die-Cast Aluminum  
 Group B 2.5W or 5W



**9217**

Die-Cast Aluminum  
 Group B 2.5W or 5W



**SHEDDING LIGHT ON THE ENERGY AND COST-SAVING ADVANTAGES OF LED TECHNOLOGY FROM VISTA**

Vista's next generation LED technology offers a lower cost of ownership over the life of the system. Here's a practical example (which assumes today's national average rate per kWh of \$0.1064): A 300-watt traditional lighting system, operated for 28,200 hours (8 hours a night for 10 years) equals a \$932. total electric cost. With an equivalent system that uses Vista's LED technology, the total electric cost would be \$233. That's a 75% savings! It's like lighting an entire yard for less than a single 75-watt light bulb.



Brass and Copper Up and Accent Fixtures



**3003** BSN Natural Brass  
**3006** Group F 5W, 10W, 17W  
**3009** Spot, medium flood or wide flood



**3003** BSO Olde Brass  
**3006** Group F 5W, 10W, 17W  
**3009** Spot, medium flood or wide flood



**2104** Copper, Natural Brass or Olde Brass  
 Group B 2.5W or 5W



**2116** Copper  
 Group A 5W  
 Spot, flood or wide flood



**2120** Copper  
 Group A 5W  
 Spot, flood or wide flood

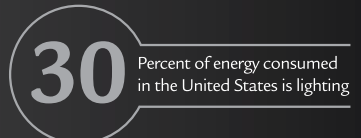
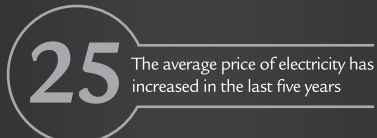
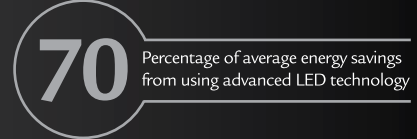


**2350** Natural Brass or Olde Brass  
 Group A 5W  
 Spot, flood or wide flood

WHY LED IS THE RESPONSIBLE CHOICE FOR YOUR NEXT PROJECT

Vista's next generation LED technology offers beautiful, sustainable lighting solutions that utilize energy efficiently and responsibly. A Vista LED system uses 70% less energy than a traditional incandescent system.

This benefits your pocketbook and the planet.



## Brass and Copper Path and Spread Fixtures



**2125** | Copper, Natural Brass  
or Olde Brass  
Group B 2.5W or 5W



**2126** | Copper, Natural Brass  
or Olde Brass  
Group B 2.5W or 5W



**2127** | Copper, Natural Brass  
or Olde Brass  
Group B 2.5W or 5W



**2128** | Copper, Natural Brass  
or Olde Brass  
Group B 2.5W or 5W



**2129** | Copper, Natural Brass  
or Olde Brass  
Group B 2.5W or 5W



**2130** | Copper, Natural Brass  
or Olde Brass  
Group B 2.5W or 5W



**2131** | Copper, Natural Brass  
or Olde Brass  
Group B 2.5W or 5W



**2132** | Copper, Natural Brass  
or Olde Brass  
Group B 2.5W or 5W



**2133** | Copper, Natural Brass  
or Olde Brass  
Group B 2.5W or 5W



**2160** Copper, Natural Brass  
or Olde Brass  
Group B 2.5W or 5W



**2161** Stainless Steel top, Brass stem  
Group B 2.5W or 5W



**2162** Stainless Steel  
Group B 2.5W or 5W



**2165** Copper, Natural Brass  
or Olde Brass  
Group B 2.5W or 5W



**2166** Stainless Steel top, Brass stem  
Group B 2.5W or 5W



**2167** Stainless Steel  
Group B 2.5W or 5W



**4306** Solid Brass  
Group B 2.5W or 5W



**9302** Solid Brass  
Group B 2.5W or 5W

Important new energy-efficiency mandates will drive increased use of LED to meet requirements. Get the latest news on our web site.

## Die-Cast Aluminum and Composite In-Ground Fixtures



<b>5250</b>	Die-Cast Aluminum
<b>5270</b>	Composite Body & Lid
Group F, 5W, 10W or 17W Spot, Medium Flood or Wide Flood	



<b>5251</b>	Die-Cast Aluminum
<b>5271</b>	Composite Body & Lid
Group F, 5W, 10W or 17W Spot, Medium Flood or Wide Flood	



<b>5252</b>	Die-Cast Aluminum
<b>5272</b>	Composite Body & Lid
Group F, 5W, 10W or 17W Spot, Medium Flood or Wide Flood	



<b>5260</b>	Die-Cast Aluminum
<b>5280</b>	Composite Body & Lid
Group F, 5W, 10W or 17W Spot, Medium Flood or Wide Flood	



<b>5261</b>	Die-Cast Aluminum
<b>5281</b>	Composite Body & Lid
Group F, 5W, 10W or 17W Spot, Medium Flood or Wide Flood	



<b>5262</b>	Die-Cast Aluminum
<b>5282</b>	Composite Body & Lid
Group F, 5W, 10W or 17W Spot, Medium Flood or Wide Flood	



<b>5263</b>	Die-Cast Aluminum
<b>5273</b>	Composite Body & Lid
Group F, 5W, 10W or 17W Spot, Medium Flood or Wide Flood	



Brass and Stainless In-Ground Fixtures



**2170  
BSO** | Olde brass  
Group F, 5W, 10W or 17W  
Spot, medium flood or wide flood



**2170  
BSN** | Natural brass  
Group F, 5W, 10W or 17W  
Spot, medium flood or wide flood



**2170  
SS** | Stainless Steel  
Group F, 5W, 10W or 17W  
Spot, medium flood or wide flood



**2171  
BSO** | Olde brass  
Group F, 5W, 10W or 17W  
Spot, medium flood or wide flood



**2171  
BSN** | Natural brass  
Group F, 5W, 10W or 17W  
Spot, medium flood or wide flood



**2171  
SS** | Stainless Steel  
Group F, 5W, 10W or 17W  
Spot, medium flood or wide flood



**2172  
BSO** | Olde brass  
Group F, 5W, 10W or 17W  
Spot, medium flood or wide flood



**2172  
BSN** | Natural brass  
Group F, 5W, 10W or 17W  
Spot, medium flood or wide flood



**2172  
SS** | Stainless Steel  
Group F, 5W, 10W or 17W  
Spot, medium flood or wide flood

Brick and Step



**4241** Die-cast aluminum  
 Group B, 2.5W, or 5W



**4242** Die-cast aluminum  
 Group B, 2.5W, or 5W



**4243** Die-cast aluminum  
 Group B, 2.5W, or 5W



**4245** Die-cast aluminum  
 Group C, 5W



**4246** Die-cast aluminum  
 Group C, 5W



**4250** Die-cast aluminum  
 Group B, 2.5W, or 5W



**4260** Die-cast aluminum  
 Group B, 2.5W



**4260M** Die-cast aluminum  
 Group B, 2.5W



**4261** Die-cast aluminum  
 Group B, 5W

Brass and Copper Brick and Step



**2141**  
COPPER  
Copper  
Group B, 2.5W or 5W



**2142**  
COPPER  
Copper  
Group B, 2.5W or 5W



**2145**  
COPPER  
Copper  
Group C, 5W



**2146**  
COPPER  
Copper  
Group C, 5W



**2141**  
BRASS  
Natural brass or Olde brass  
Group B, 2.5W or 5W



**2142**  
BRASS  
Natural brass or Olde brass  
Group B, 2.5W or 5W



**2145**  
BRASS  
Natural brass or Olde brass  
Group C, 5W



**2146**  
BRASS  
Natural brass or Olde brass  
Group C, 5W



**4260**  
BRASS  
Copper, Natural Brass or Olde Brass  
Group B, 2.5W

Underwater and Specialty



**2114** | Solid Brass or Stainless Steel  
**2118** | Group B 2.5W or Group C 5W



**2116** | Solid Brass or Stainless Steel  
**2119** | Group B 2.5W or Group C 5W



**4018** | Nickel Plated Stainless Steel  
 or Aluminum  
 Group C, 5W



**4217** | Composite  
 Group B 2.5W or 5W



**5217** | Composite  
 Group B 2.5W or 5W



Bollards



**2138** | Copper  
 Group C, 5W



**2500** | Aluminum  
 Group C, 5W



**8227** | Aluminum  
 Group C, 5W



## Emitter Guide

LED TYPE	LED NUMBER	WATTS	BEAM SPREAD	LUMINOSITY (CANDLEPOWER)	RATED LIFE (HOURS)	LED ORDER CODE
<b>GROUP A</b> Directional LED Assemblies	LA-5-SP	5	12°	1,810	50,000	*-LA5SP
	LA-5-FL	5	30°	394	50,000	*-LA5FL
	LA-5-WFL	5	45°	137	50,000	*-LA5WF
<b>GROUP B</b> Non-Directional LED Assemblies	LB-2-ND	2.5	-	-	50,000	*-LB2ND
	LB-5-ND	5	-	-	50,000	*-LB5ND
<b>GROUP C</b> Non-Directional LED Assemblies	LC-5-ND	5	-	-	50,000	*-LC5ND
<b>GROUP E</b> Directional LED Assemblies	LE-10-SP	10	12°	-	50,000	*-LE10SP
	LE-10-FL	10	30°	-	50,000	*-LE10FL
	LE-10-WFL	10	45°	-	50,000	*-LE10WF
	LE-30-SP	30	12°	-	50,000	*-LE30SP
	LE-30-FL	30	30°	-	50,000	*-LE30FL
	LE-30-WFL	30	45°	-	50,000	*-LE30WF
<b>GROUP F</b> Directional LED Assemblies	LF-3-SP	5	12°	877	50,000	** -LF3SP
	LF-3-MF	5	20°	589	50,000	** -LF3MF
	LF-3-WF	5	50°	121	50,000	** -LF3WF
	LF-6-SP	10	12°	1873	50,000	** -LF6SP
	LF-6-MF	10	20°	1156	50,000	** -LF6MF
	LF-6-WF	10	50°	233	50,000	** -LF6WF
	LF-9-SP	17	12°	2265	50,000	** -LF9SP
	LF-9-MF	17	20°	1779	50,000	** -LF9MF
	LF-9-WF	17	50°	369	50,000	** -LF9WF

\* Specify one of the following color temperatures when ordering: (-W) warm, (-N) neutral, (-C) cool

\*\* Specify one of the following color temperatures when ordering: (-W) warm, (-C) cool

## Transformers



ES-150  
Model shown with  
DTC-200 digital  
astronomic timer

UL 1838  
Made in USA

### ES SERIES ENERGY SMART TRANSFORMERS

150 watts

Dual voltage taps – 12 volts and 15 volts.

#### KEY FEATURES:

- Stainless steel cabinet – 20 gauge, top-grade, polished – resists corrosion. Clear polyester powder-coated finish resists smudges.
- Grounded and isolated with encapsulated core and coil.
- UL listed to US and Canada safety standards for landscape lighting (UL 1838).
- Customize with Vista mechanical, digital and astronomic timer modules and/or photocell for energy-smart control. Removable modules allow convenient hand-held programming of control device separate from transformer.
- Primary coil auto thermal shutoff, secondary coil toggle circuit breaker.
- Contractor-friendly cabinet design for ease of mounting and wiring. Adjustable cable race way feeder easily accommodates multiple wire runs.

#### APPLICATIONS:

- Compact site areas including courtyards, townhomes, condominiums, pocket parks, building signage, green roofs, etc.
- Energy-smart LED lighting.



CONSTANT POWER  
True Constant Voltage At All  
Terminals Under Maximum Load





### THE POWER OF PERFORMANCE:

Vista's transformers lead the industry in features, quality and customer satisfaction. Vista's meticulous attention to detail makes them the easiest for contractors to install and robust construction throughout ensures decades of reliable performance. Vista ES, CTS and MT transformers conform to UL 1838, Underwriter's Laboratories standard of safety for Landscape Lighting Systems. And only Vista offers the widest selection of modular lighting controls that can be easily added to any transformer to make it compliant with the latest energy-saving standards including mechanical, digital and astronomic timers plus photocell controls.



MT-1200  
shown with optional  
DTC-200 digital timer

   
UL 1838  
Made in USA

**MT & CTS SERIES TRANSFORMERS**

Available in 300, 600, 900 & 1200 Watts

**DIMENSIONS:**

17" High x 9" Wide x 5½" Deep.

**EXTERIOR CONSTRUCTION:**

20-gauge polished, top-grade domestic, 304 stainless steel resists corrosion. Clear polyester powder-coated finish resists smudges.

**TRANSFORMER CHARACTERISTICS:**

**Available Wattage:** 300, 600, 900 & 1200 Watts

**Primary Voltage:** 120 Volts

**Secondary Voltage:** MT-11, 12, 13, 14, and 15 Volts.

CTS -12 Volts, 300 & 600 watts with high/low settings. Grounded and isolated with encapsulated core and-coil.

**LED INDICATORS:**

Industry first red and green LED On/Off indicators to facilitate troubleshooting on both primary and secondary.

**PRIMARY PROTECTION:**

Auto thermal shut-off.

**SECONDARY PROTECTION:**

Resettable high performance magnetic circuit breaker. The toggle switch may also be used for manual on/off switching.

**WIRING:**

- Removable, swing-down enclosure bottom with Adjustable Cable Raceway Feeder (ACRF).
- Extra-large terminal strip for multiple low voltage cable connections.
- Separate accessory terminal strip for easy installation of optional photo-cell, motion sensor, or other external switching devices.
- Large 1¼"-2" and multiple ½"-¾" knockouts.
- 120-volt terminal strip for easy hardwiring.
- 120-volt accessory receptacle for use with optional, removable multi-setting mechanical (TC-112) 24-hour timer, electronic/digital (DTC-170) 7-day timer or astronomic (DTC-200) timer. Removable modules allow convenient hand-held programming of control device separate from transformer.

**CERTIFICATION:**

MT & CTS series transformers are UL Listed to U.S. and Canadian safety standards for landscape lighting transformers (UL 1838).



**CONSTANT POWER**  
True Constant Voltage At All  
Terminals Under Maximum Load

*At Vista, we believe strongly in manufacturing our products in the United States. Our motivated workforce works hard to deliver products that set the standards for quality and performance.*



*Match your LED accent fixture to your project with 15 different finish options.*



*Unmatched optics and color temperature options provide advanced light output.*



*Designed and assembled in Simi Valley, California.*



**VISTA  
PROFESSIONAL  
OUTDOOR  
LIGHTING**



1625 Surveyor Ave, Simi Valley, CA 93063 (800) 766-VISTA (8478) [www.VistaPro.com](http://www.VistaPro.com)

