



WILA



Individual

LED Lighting Solutions

WILA is a leading specialist for individual lighting. Individual lighting inspires design and challenges standards. WILA engages our people and our customers in solutions, not just products. From initial project design to final fulfillment, WILA has stood by its quality, safety, service and performance standards with every luminaire produced. Our mission is to improve the visual environment with a concentration of a simple philosophy we call 3P; People, Products and Performance.

With this objective in mind, WILA develops modular and flexible lighting tools guaranteeing a high level of creative freedom in lighting design. Innovation in the latest technologies has been a cornerstone of our philosophy. WILA has been engineering LED products since 2000, proving its leadership in solid state design every step of the way.

Founded in 1857, WILA now enjoys a worldwide reputation for individual lighting solutions in offices and administrative buildings, social institutions, schools and education facilities, the health, retail and transportation sectors.

WILA Lighting USA's factory is in Tustin, California. Most of our offerings are made right here in the USA. Our two other factories in Europe manufacture products with facilities located in Iserlohn Germany, where it was founded, and Oxford, England. WILA USA is international with a focus on the North American markets and sales partners in more than 25 countries.

WILA
Pronounced: (Vee-la)



Project: CIE Games - Long Beach, CA
Architect & Lighting Designer: Gensler
Product: 610 - Zylinder LED Downlight

Chroma Technology

WILA Lighting provides quality LED products with the best color consistency and reliability available on the market without the worry of color shifts on your project. We use XICATO® LED in all of our Chroma series fixtures which eliminates concerns of shifts to pinks and greens.

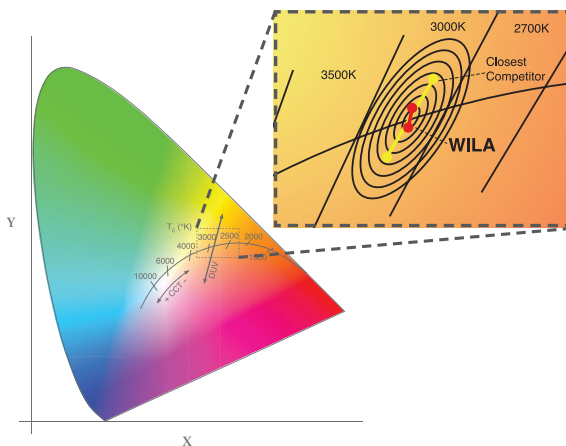
- LED: XICATO® Single Source, Cold Remote Phosphor Technology
- SDCM: 2x, 1y for 2 MacAdam Ellipse Consistency
- DUV: +/- .001 (INDUSTRY BEST)
- LUMENS: 700, 1000, 1500, 2200, 3000lm and 4000lm (4000lm available Q1 2014)
- CCT: 2700, 3000, 3500 and 4000 Kelvin
- CRI: 80+ and 95+, VIBRANT Color Enhancing Phosphor
- L85: 85% of original output at 50,000 hours (INDUSTRY BEST)
- FIXTURE WARRANTY: 5 YEAR

VIBRANT SERIES with Color Enhancing Phosphor

CRI (Ra) is like a box of 8 crayons. Imagine instead that you had a box of 32 crayons that included your original 8 and added more colors. With this new box of crayons you could create brighter, more vivid and exciting visual experiences and show more depth and richness of objects. By adding more colors to our box we are increasing our color space, which is called the color gamut area—which can be measured for any given light source. The new Vibrant LED series is a new innovative form of light enhancing reds, whites and blues. Vibrancy is now offered with any 2200 and 3000 lumen XICATO® packages with WILA.

We stand behind our claims for SDCM: 2X, 1Y with the industry's first 5 YEAR NO COLOR SHIFT WARRANTY

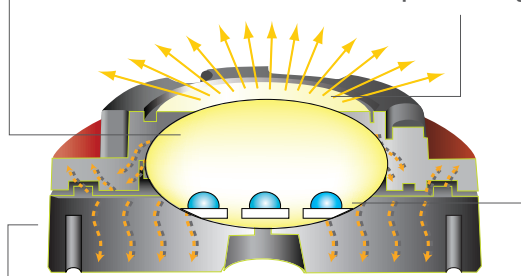
As shown on this CIE 1931 Chromaticity Chart. The ellipses represent recognizable changes in color. WILA stays within 2 on the X axis and only 1 on the Y axis on the black body curve represented below. Greens and Pinks are not taken into account by most manufacturers. Our Duv is within 0.001 which makes white light white.



The color holds over time, eliminating concern of color shifting. The phosphor will not degrade due to heat on phosphor and junction temperatures.

Patented internal optical mixing cavity

Patented Corrected Cold Phosphor Technology®



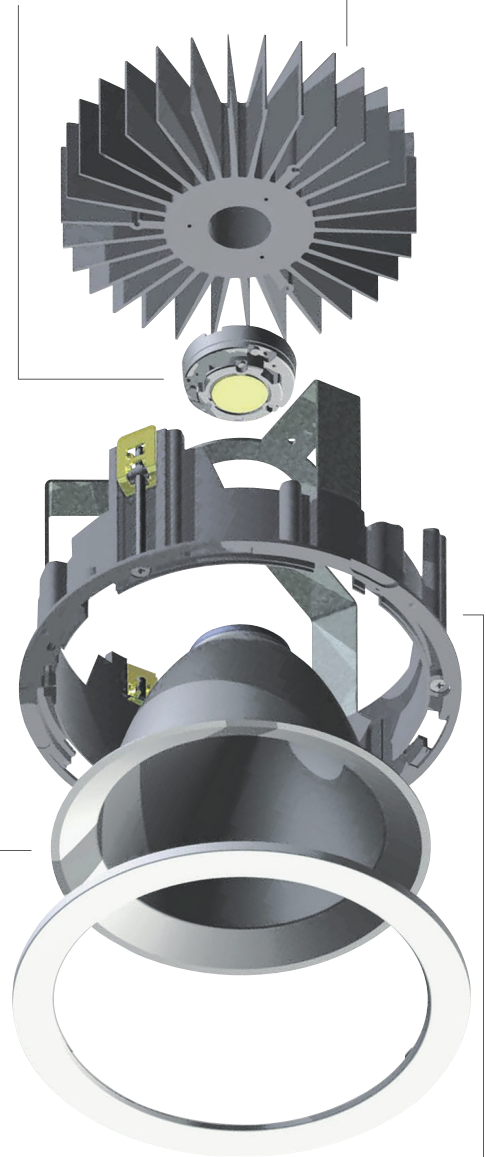
Efficient thermal design

LEDs (not to scale)



Superior Thermal Management
for extended life and reliability

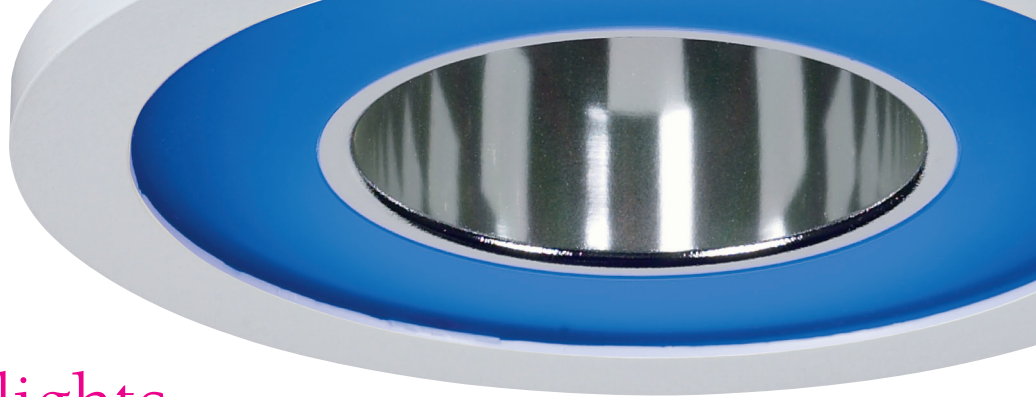
XICATO® Cold Remote Phosphor LED Module
a maximum +/- 50 Kelvin



Precision Designed
by optical engineers
for the XICATO® XSM

MS-3 Magnesium Ring
for simple installation,
preventing ceiling sag.
Accommodates up to 2"
ceiling thickness

Bayonet Trim Ring
designer LiteOptics™
also offered



621 LED Downlights

The 621 Recessed LED Downlight with Chroma technology provides energy efficient light using a cold remote phosphor module by XICATO®. Multiple reflector beam spreads, finishes and LiteOptics™ allow for creative lighting solutions to illuminate architectural spaces with an SDCM of only 2.

Vibrant XICATO® XSM LED for rich color saturation with an SDCM of 2, without sacrificing efficacy. Go to WilaLighting.com for vibrancy series specification details.

beam

20° narrow

40° medium

60° wide

80° flood

LiteOptics™

Standard open trim ring included. See pg. 29 for decorative LiteOptics™.

Ordering Code

Follow the steps to specify your luminaire.

example: **621 - 754 - DA20 - 80 - 277 - 4**

① series	② catalog#			③ reflector & degree code	④ CRI code	⑤ voltage code*	⑥ IC*
621	a lumen	b aperture	c color temperature				
	4 700lm	2 2"	2 2700K	DA20 diffuse, 20°	80 80 CRI	120 120V	3 3I
	5 1000lm	3 3"	3 3000K	DA40 diffuse, 40°	95 95 CRI*	277 277V	4 4I
	6 1500lm	4 4"	9 3500K	DA60 diffuse, 60°	V vibrant**		5 5I
	7 2200lm*	5 5"	4 4000K	DA80 diffuse, 80°*			6 6I
	8 3000lm**	6 6"		SA20 specular, 20°			
	9 4000lm**			SA40 specular, 40°**			
				SA60 specular, 60°			
				SSA20 semi-specular, 20°			
				SSA40 semi-specular, 40°			
				SSA60 semi-specular, 60°			
				WH80 white, 80°*			

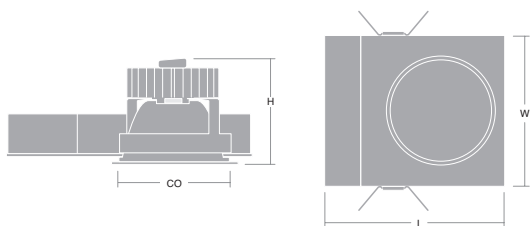
Notes:
 4000lm available Q1 2014
 *2200lm LEDs not available in 2" or 3" aperture.
 **3000lm and 4000lm LED only available for 6" aperture.

Notes:
 *DA80 and WH80 not available in 2" or 3" aperture.
 **SA40 must be used on 2" aperture.

Notes:
 *95 CRI is for 700lm, 1000lm and 1500lm LEDs only
 **for (3000K) 2200lm and 3000lm only

Notes:
 *Specify voltage for thermal coupler

Notes:
 *1500 lumen maximum ETL pending for IC



dimensions				
	CO	H	L	W
2"	3-3/4"	6"	11-3/4"	7-7/8"
3"	3-3/4"	6"	11-3/4"	7-7/8"
4"	4-3/4"	5-3/4"	11-3/4"	7-7/8"
5"	5-5/8"	6-1/8"	13-7/8"	7-7/8"
6"	6-5/8"	7-1/2"	15-7/8"	10-5/8"

Housing

Recessed housing of modular construction consists of ceiling fitting plate assembly with integral junction box from 16-gauge steel, integral driver, and quick connect whip. Can be installed independent of lamp socket housing module to allow finishing / closing of ceiling construction. 27" long steel mtg. bars (MB27) are supplied as standard.

MS-3 Mounting System

Patented 3-point bayonet latch mounting system consists of die-cast magnesium trim ring and mounting ring with adjustable throat to accommodate up to a 2" ceiling thickness. Mounting ring incorporates integral yoke from 16-gauge steel for easy optical assembly.

Electrical

Electronic multi-voltage (120V or 277V driver). Replaceable LED module with quick disconnects. Extruded aluminum heat sink. Junction box listed for (8) eight #12 AWG 90° C conductors and feed through wiring. Dimming must be specified 120V/277V, 3-wire Hi-Lume control and EcoSystem control from Lutron, or Mark 7, 0-10V, from Advance.

Listings

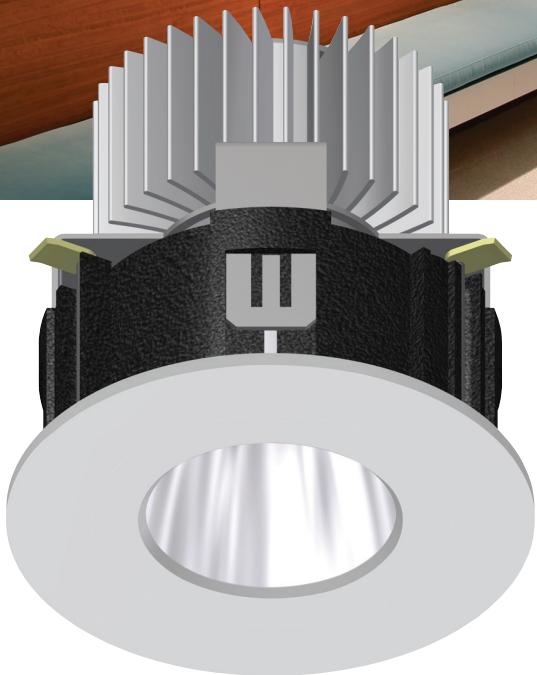
ETLus Listed to UL1598 (Type Non-IC, suitable for dry and damp locations)

cETL Listed to CSA C22.2 #250.0

Made in the USA - meets the requirements of the Buy American provision within the ARRA.



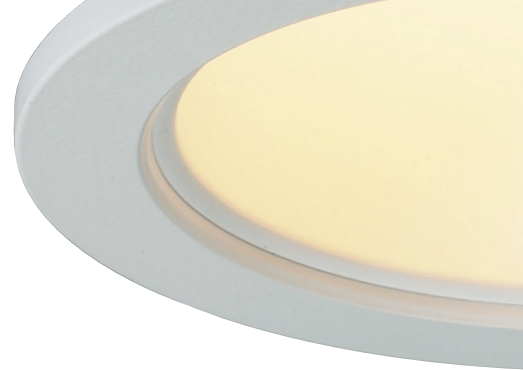
Shown with
Pupil optic blue LiteOptic™



621 LED Downlight

2"

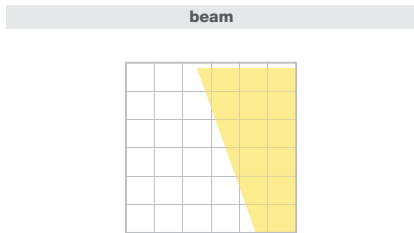
Project Name: eHarmony
Product: 621 - 5" LED Downlight - Pupil Optic Blue



622 LED Wall Wash

The 622 Recessed LED Wall Wash with Chroma technology provides energy efficient light using a cold remote phosphor module by XICATO®. It is arguably the best performing LED wall wash available on the market with minimal to no scallop effect on the wall. The even illumination and perfect fixture-to-fixture color consistency make the 622 number one in its class. 360° rotatable optical assembly standard.

Vibrant XICATO® XSM LED for rich color saturation with an SDCM of 2, without sacrificing efficacy. Go to WilaLighting.com for vibrant series specification details.



Ordering Code

Follow the steps to specify your luminaire.

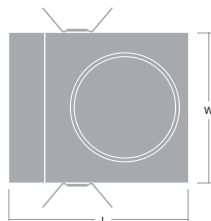
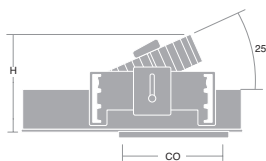
example: 622 - 762 - 80 - 120

① series	② catalog#			③ CRI code	④ voltage code*
622	a lumen	b aperture	c color temperature	80 80 CRI 95 95 CRI* V vibrant**	120 120V 277 277V
	4 700lm 5 1000lm 6 1500lm 7 2200lm 8 3000lm* 9 4000lm*	4 4" 6 6"	2 2700K 3 3000K 9 3500K 4 4000K		

Notes:
4000lm available Q1 2014
*3000lm and 4000lm LED only available for 6" aperture.

Notes:
*95 CRI is for 700lm, 1000lm and 1500lm LEDs only
**for (3000K) 2200lm and 3000lm only

Notes:
*Specify voltage for thermal coupler



dimensions				
	CO	H	L	W
4"	4-3/4"	5-1/8"	11-3/4"	7-7/8"
6"	6-5/8"	5-3/8"	15-7/8"	10-5/8"

Housing

Recessed housing of modular construction consists of ceiling fitting plate assembly with integral junction box from 16-gauge steel, integral driver, and quick connect whip. Can be installed independent of lamp socket housing module to allow finishing / closing of ceiling construction. 27" long steel mtg. bars (MB27) are supplied as standard.

MS-3 Mounting System

Patented 3-point bayonet latch mounting system consists of die-cast magnesium trim ring and mounting ring with adjustable throat to accommodate up to a 2" ceiling thickness. Mounting ring incorporates integral yoke from 16-gauge steel for easy optical assembly.

Electrical

Electronic multi-voltage (120V or 277V driver). Replaceable LED module with quick disconnects. Extruded aluminum heat sink. Junction box listed for (8) eight #12 AWG 90° C conductors and feed through wiring. Dimming must be specified 120V/277V, 3-wire Hi-Lume control and EcoSystem control from Lutron, or Mark 7, 0-10V, from Advance.

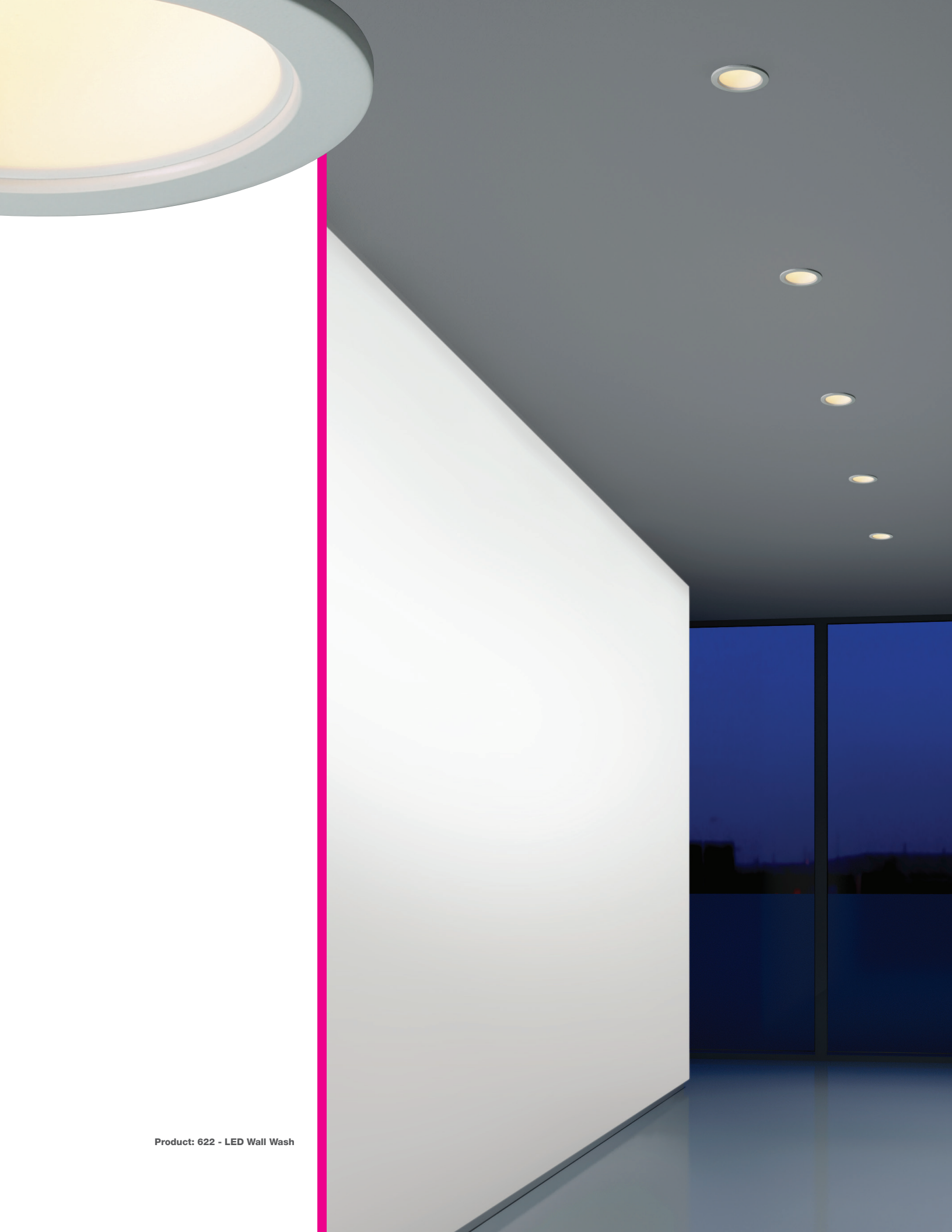
Listings

ETLus Listed to UL1598 (Type Non-IC, suitable for dry and damp locations)

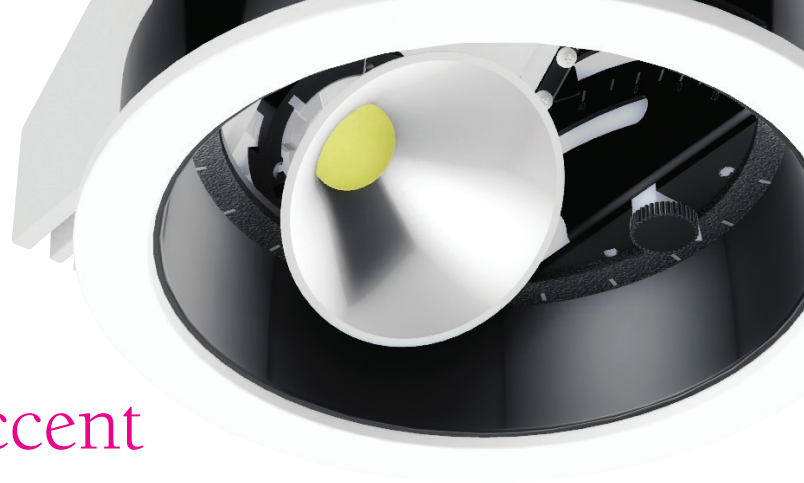
cETL Listed to CSA C22.2 #250.0

Made in the USA - meets the requirements of the Buy American provision within the ARRA.





Product: 622 - LED Wall Wash

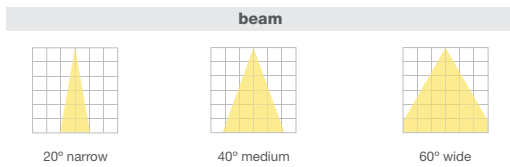


623 LED Adjustable Accent

Recessed

The 623 LED Recessed Adjustable Accent with Chroma technology provides energy efficient light using a cold remote phosphor module by XICATO®. An innovative approach allows for 359° rotation and 20° 4" or 40° 6" tilt with a lockable aiming feature standard for both horizontal and vertical axes. Adjustments can easily be made from below the ceiling. This powerful accent light is a great flush, recessed alternative to spot fixtures accepting interchangeable 20°, 40° or 60° beam spreads.

Vibrant XICATO® XSM LED for rich color saturation with an SDCM of 2, without sacrificing efficacy. Go to WilaLighting.com for vibrancy series specification details.



Ordering Code

Follow the steps to specify your luminaire.

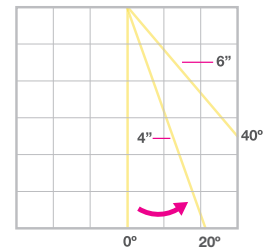
example: 623 - 762 - SA20 - 80 - 120

① series	② catalog#			③ reflector & degree code	④ CRI code	⑤ voltage code*																					
623	<table border="1"> <thead> <tr> <th>a lumen</th> <th>b aperture</th> <th>c color temperature</th> </tr> </thead> <tbody> <tr> <td>4 700lm</td> <td>4 4"</td> <td>2 2700K</td> </tr> <tr> <td>5 1000lm</td> <td>6 6"</td> <td>3 3000K</td> </tr> <tr> <td>6 1500lm</td> <td></td> <td>9 3500K</td> </tr> <tr> <td>7 2200lm*</td> <td></td> <td>4 4000K</td> </tr> <tr> <td>8 3000lm*</td> <td></td> <td></td> </tr> <tr> <td>9 4000lm*</td> <td></td> <td></td> </tr> </tbody> </table>	a lumen	b aperture	c color temperature	4 700lm	4 4"	2 2700K	5 1000lm	6 6"	3 3000K	6 1500lm		9 3500K	7 2200lm*		4 4000K	8 3000lm*			9 4000lm*					SA20 specular, 20° SA40 specular, 40° SA60 specular, 60°	80 80 CRI 95 95 CRI* V vibrant**	120 120V 277 277V
a lumen	b aperture	c color temperature																									
4 700lm	4 4"	2 2700K																									
5 1000lm	6 6"	3 3000K																									
6 1500lm		9 3500K																									
7 2200lm*		4 4000K																									
8 3000lm*																											
9 4000lm*																											

Notes:
 4000lm available Q1 2014
 *2200lm, 3000lm and 4000lm LED only available for 6" aperture.

Notes:
 *95 CRI is for 700lm, 1000lm and 1500lm LEDs only
 **for (3000K) 2200lm and 3000lm only

Notes:
 *Specify voltage for thermal coupler



Housing

Recessed housing of modular construction consists of ceiling fitting plate assembly with integral junction box from 16-gauge steel, integral driver, and quick connect whip. Can be installed independent of lamp socket housing module to allow finishing / closing of ceiling construction. 27" long steel mtg. bars (MB27) are supplied as standard.

MS-3 Mounting System

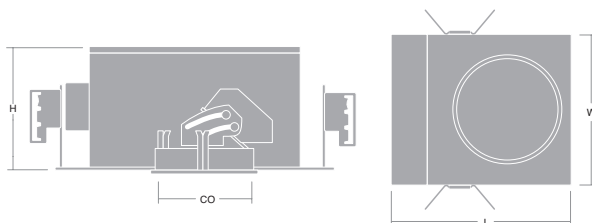
Patented 3-point bayonet latch mounting system consists of die-cast magnesium trim ring and mounting ring with adjustable throat to accommodate up to a 2" ceiling thickness. Mounting ring incorporates integral yoke from 16-gauge steel for easy optical assembly.

Electrical

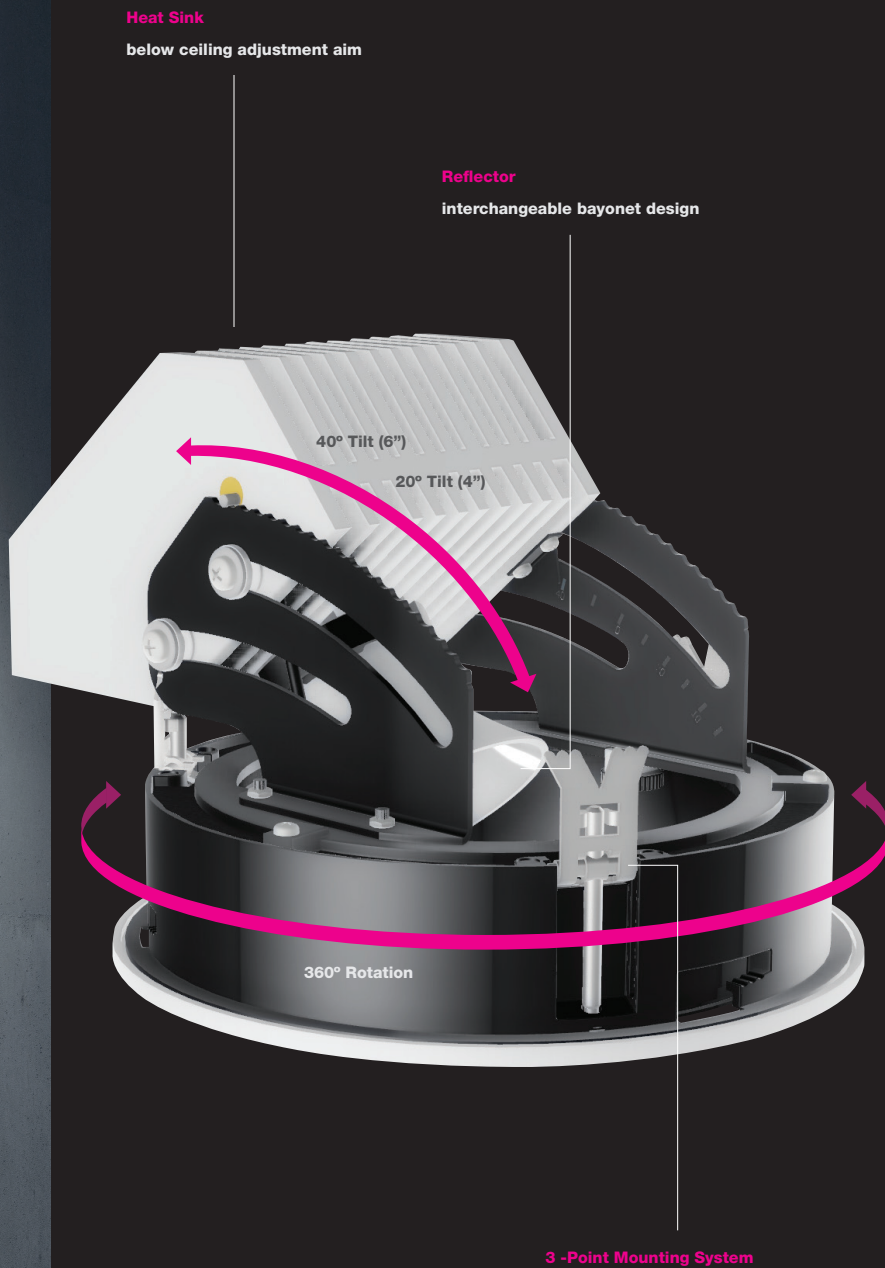
Electronic multi-voltage (120V or 277V driver). Replaceable LED module with quick disconnects. Extruded aluminum heat sink. Junction box listed for (8) eight #12 AWG 90° C conductors and feed through wiring. Dimming must be specified 120V/277V, 3-wire Hi-Lume control and EcoSystem control from Lutron, or Mark 7, 0-10V, from Advance.

Listings

ETLus Listed to UL1598 (Type Non-IC, suitable for dry and damp locations)
 cETL Listed to CSA C22.2 #250.0
 Made in the USA - meets the requirements of the Buy American provision within the ARRA.



dimensions				
	CO	H	L	W
4"	4-3/4"	6-1/8"	11-3/4"	7-7/8"
6"	6-5/8"	8-1/4"	18-1/2"	14"



Product: 623 - LED Adjustable Accent

610 & 611 LED Glass Optic

The 610 and 611 Recessed, 5", LED Downlight with Chroma technology provides energy efficient light using a cold remote phosphor module by XICATO®. A German artisan, opal glass optic allows for a warmer design for a more creative lighting solution to illuminate architectural spaces.

Housing

Recessed housing of modular construction consists of ceiling fitting plate assembly with integral junction box from 16-gauge steel, integral driver, and quick connect whip. Can be installed independent of lamp socket housing module to allow finishing / closing of ceiling construction. 27" long steel mtg. bars (MB27) are supplied as standard.

MS-3 Mounting System

Patented 3-point bayonet latch mounting system consists of die-cast magnesium trim ring and mounting ring with adjustable throat to accommodate up to a 2" ceiling thickness. Mounting ring incorporates integral yoke from 16-gauge steel for easy optical assembly.

Electrical

Electronic multi-voltage (120V or 277V driver). Replaceable LED module with quick disconnects. Extruded aluminum heat sink. Junction box listed for (8) eight #12 AWG 90° C conductors and feed through wiring. Dimming must be specified 120V/277V, 3-wire Hi-Lume control and EcoSystem control from Lutron, or Mark 7, 0-10V, from Advance.

Listings

ETLus Listed to UL1598 (Type Non-IC, suitable for dry and damp locations)
 cETL Listed to CSA C22.2 #250.0
 Made in the USA - meets the requirements of the Buy American provision within the ARRA.



Ordering Code

Follow the steps to specify your luminaire.

example: **610 - 554 - 80 - 277 - 4**

① series	② catalog#			③ CRI code	④ voltage code*	⑤ IC*
	a lumen	b aperture	c color temperature			
610* 611**	4 700lm 5 1000lm 6 1500lm	5 5"	2 2700K 3 3000K 9 3500K 4 4000K	80 80 CRI 95 95 CRI*	120 120V 277 277V	5 5I

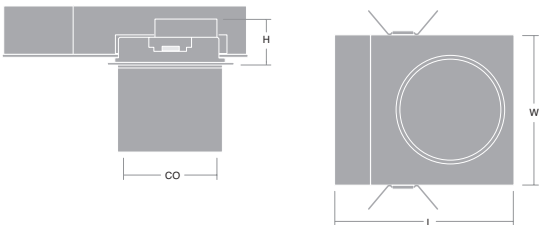
Notes:
 *Zylinder LiteOptic™
 **Parashade LiteOptic™

Notes:
 *95 CRI is for 700lm, and
 1000lm LEDs only

Notes:
 *Specify voltage for thermal
 coupler

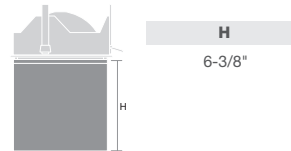
Notes:
 1500 lumen maximum
 ETL pending for IC

610

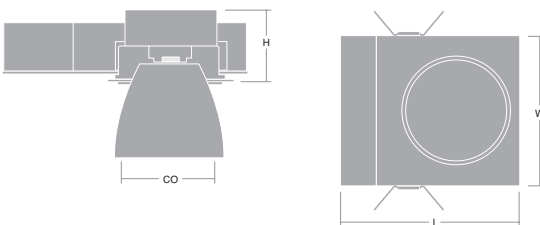


dimensions 610

	CO	H	L	W
5"	5-5/8"	3-1/4"	13-7/8"	7-7/8"

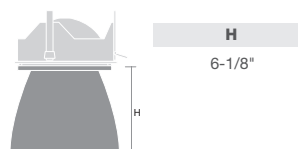


611



dimensions 611

	CO	H	L	W
5"	5-5/8"	5-3/8"	13-7/8"	7-7/8"



611 Parashade

LED Downlight



610 Zylinder

LED Downlight



Product: 611 - 5" Parashade LED Downlight

608 LED Cylinder

Surface and Pendant

LED Downlight with Chroma technology provides energy efficient light using a cold remote phosphor module by XICATO®. The 608 Series includes a surface mount cylinder (S608), wall mount (W608), rigid pendant (RP608) and cable pendant (P608). Surface and pendant offered in 3", 4" and 6" apertures. Wall mount only offered in 6".

Vibrant XICATO® XSM LED for rich color saturation with an SDCM of 2, without sacrificing efficacy. Go to WilaLighting.com for vibrancy series specification details.

beam

LiteOptics™

Standard open trim ring included. See pg. 29 for decorative LiteOptics™.

Housing

Extruded aluminum housing accepts optical assembly and die-cast aluminum cover with white paint or black or matte silver anodized finish. Electrical components mounted in upper driver and wiring compartment. Thermal management is achieved with internal extruded aluminum heat sink along with stacked aluminum rings.

MS-3 Mounting System

Patented 3-point bayonet latch mounting system consists of die-cast magnesium trim ring and mounting ring with adjustable throat to accommodate up to a 2" ceiling thickness. Mounting ring incorporates integral yoke from 16-gauge steel for easy optical assembly.

Electrical

Electronic multi-voltage (120 or 277V driver). Replaceable LED module with quick disconnects. Extruded aluminum heat sink. 3" & 4" Fixtures include integral dimming driver (Reverse Phase Dimming, ELV, Trailing Edge). 3" available in 120V only. 6" RP608, S608, & W608 available in dimming (3-wire Hi-Lume control and EcoSystem control from Lutron; Mark 7, 0-10V from Advance).

Listings

ETLus Listed to UL1598 (suitable for dry and damp locations)
 cETL Listed to CSA C22.2 #250.0
 Made in the USA - meets the requirements of the Buy American provision within the ARRA.

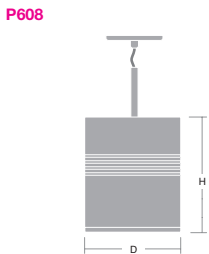


Ordering Code

Follow the steps to specify your luminaire.

example: S608 - 533 - SSA60 - 80 - MC - 120

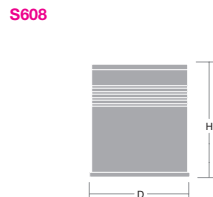
① series	② catalog#			③ reflector & degree code	④ CRI code	⑤ finish	⑥ voltage code*
	a) lumen	b) aperture	c) color temperature				
P608 RP608 S608 W608	4 700lm† 5 1000lm 6 1500lm** 7 2200lm† 8 3000lm† 9 4000lm†	3 3" 4 4" 6 6"	2 2700K 3 3000K 9 3500K 4 4000K	DA20 diffuse, 20° DA40 diffuse, 40° DA60 diffuse, 60° DA80 diffuse, 80°* SA20 specular, 20° SA40 specular, 40° SA60 specular, 60° SSA20 semi-specular, 20° SSA40 semi-specular, 40° SSA60 semi-specular, 60° WH80 white, 80°* BSH blue glass** WSH white glass**	80 80 CRI 95 95 CRI* V vibrant**	BK black MC matte silver WH white	120 120V 277 277V
<p>Notes: 4000lm available Q1 2014 †700lm LED not available for 4" aperture. **1500lm LEDs not available in 3" aperture. ‡2200lm, 3000lm and 4000lm LED only available for 6" aperture.</p>				<p>Notes: *for 3" - 95 CRI is for 700lm LEDs only †for 4" and 6" - 95 CRI is for 700lm and 1000lm LEDs only **for (3000K), 2200lm and 3000lm only</p>		<p>Notes: *Specify voltage for thermal coupler. Consult factory for 3" and 4" aperture</p>	
<p>Notes: *DA80 and WH80 not available on 3" or 4" apertures. **BSH and WSH for 3" aperture only</p>							



dimensions S608

	D	H
3"	3-1/8"	5-1/8"
4"	4-9/16"	5-7/16"
6"	7-1/8"	10-1/2"

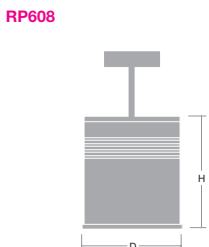
Notes:
3" and 4" have similar construction to the 6" shown



dimensions S608

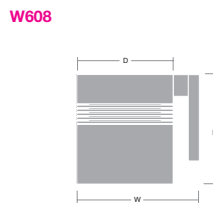
	D	H
3"	3-1/8"	5-7/8"
4"	4-9/16"	5-3/8"
6"	7-1/8"	10-1/2"

Notes:
3" and 4" have similar construction to the 6" shown



dimensions P608

	D	H
6"	7-1/8"	10-1/2"



dimensions P608

	D	H
6"	7-1/8"	10-1/2"

W

9-1/4"



S608
LED Downlight



RP608
LED Downlight

680 LEDbay

LED pendant mounted low bay fixture with Chroma technology provides energy efficient light using a cold remote phosphor module by XICATO®. Two sizes are available offering different lumen packages. Spun aluminum reflectors and acrylic, prismatic reflector are offered in 9" and 16" diameters. An opal or blue, cased glass shade can be specified for the 3", cable mounted only option. 680 is offered with cable pendant (P680) and rigid pendant (RP680). P680 can also be mounted on WILA 700 or 710 series line voltage tracks.

Vibrant XICATO® XSM LED for rich color saturation with an SDCM of 2, without sacrificing efficacy. Go to WilaLighting.com for vibrancy series specification details.

For lens and wire guard accessories consult factory.

Housing

Machined aluminum housing with white, matte silver or black finish. Electrical components mounted in the housing for mid to lower lumen packages. Higher lumen packages have driver compartment canopy at ceiling.

Electrical

Electronic multi-voltage (120 or 277V driver). Replaceable LED module with quick disconnects. Extruded aluminum heat sink. 3" P680 & 4" RP680 (1500 lum) include integral dimming driver (Reverse Phase Dimming, ELV, Trailing Edge). 3" available in 120V only. 4" P680 & RP680 (2200 lum/3000 lum) available in dimming (3-wire Hi-Lume control and EcoSystem control from Lutron; Mark 7, 0-10V from Advance).

Listings

ETLus Listed to UL1598 (suitable for dry and damp locations)

cETL Listed to CSA C22.2 #250.0

Made in the USA - meets the requirements of the Buy American provision within the ARRA.



made in the USA

LM-79

Ordering Code

Follow the steps to specify your luminaire.

example: **P680 - 743 - M16 - 80 - WH - 120**

① series	② catalog#			③ reflector & degree code	④ CRI code	⑤ finish	⑥ voltage code*
P680 RP680†	lumen	aperture	color temperature	DA 9" metal* BL 9" blue glass* WH 9" white glass* M16 16" metal** A16 16" acrylic**	80 80 CRI 95 95 CRI* V vibrant**	BK black MC matte silver WH white	120 120V 277 277V
	4 700lm 5 1000lm 7 2200lm 8 3000lm 9 4000lm	3 3" * 4 4" **	2 2700K 3 3000K 9 3500K 4 4000K				

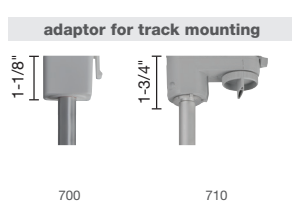
Notes:
4000lm available Q1 2014
*3" aperture available for P680 with 700lm or 1000lm only.
†RP680 available in 4" aperture only
**4" aperture available with 2200lm, 3000lm, or 4000lm only.

Notes:
*reflectors for 9" aperture only.
**reflectors for 16" aperture only.

Notes:
*95 CRI is for 700lm, 1000lm and 1500lm LEDs only
**for (3000K) 2200lm and 3000lm only

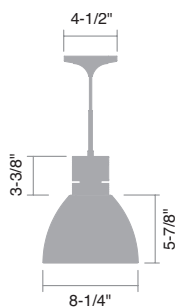
Notes:
*Specify voltage for thermal coupler

⑦ adaptor option*
700BK ECO/Halo black 700MC ECO/Halo matte silver 700WH ECO/Halo white 710BK GEO black 710MC GEO matte silver 710WH GEO white

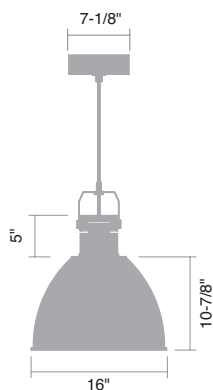


Notes:
*adaptor for track mounting available for 9" aperture only

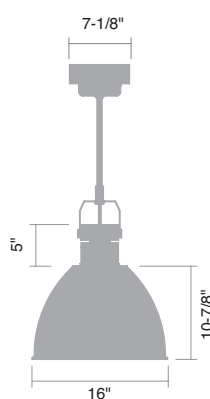
3", P680 ≤ 1000lm



4", P680 ≤ 3000lm



4", RP680 ≤ 3000lm





P680

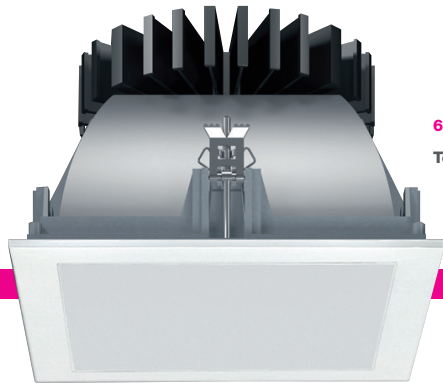
LEDbay white glass 9"

P680

LEDbay metal reflector 16"

P680

LEDbay acrylic reflector 16"



661
Tentec LED Downlight square

661 & 665 Tentec LED

Downlight

The 661 and 665 Recessed, 6", LED Downlight provides energy efficient light using performance, single source LED. Using performance LED from Bridgelux with an SDCM of only 3. Tentec offers a high performance, economical solution. 661 is a square aperture and 665 is a round aperture.

LiteOptics™

Standard open trim ring included. See pg. 29 for decorative LiteOptics™.

Housing

Recessed housing of modular construction consists of ceiling fitting plate assembly with integral junction box from 16-gauge steel, integral driver, and quick connect whip. Can be installed independent of lamp socket housing module to allow finishing / closing of ceiling construction. 27" long steel mtg. bars (MB27) are supplied as standard.

MS-3 Mounting System

Patented 3-point bayonet latch mounting system consists of trim ring and mounting ring with adjustable throat to accommodate up to a 2" ceiling thickness. Mounting ring incorporates integral yoke and field disconnect compartment for easy assembly.

Electrical

Electronic multi-voltage (120V or 277V driver). Replaceable LED module with quick disconnects. Extruded aluminum heat sink. Junction box listed for (8) eight #12 AWG 90° C conductors and feed through wiring. Dimming must be specified 120V/277V, 3-wire Hi-Lume control and EcoSystem control from Lutron, or Mark 7, 0-10V, from Advance.

Listings

ETLus Listed to UL1598 (Type Non-IC, suitable for dry and damp locations)
cETL Listed to CSA C22.2 #250.0



LM-79

Ordering Code

Follow the steps to specify your luminaire.

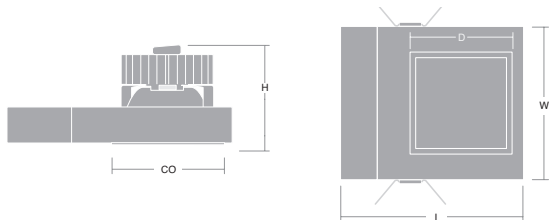
example: 665 - 663 - SSA90 - 80 - 277

① series	② catalog#			③ reflector & degree code	④ CRI code	⑤ voltage code*
	a lumen	b aperture	c color temperature			
661*				SSA65 semi-specular, 65°	80 80 CRI	120 120V
665**		6 6"	3 3000K			277 277V
	5 1200lm		9 3500K			
	6 1650lm					
	7 2300lm					
	8 3200lm					
	9 4300lm					

Notes:
*Square
**Round

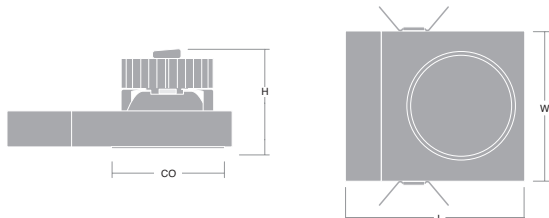
Notes:
*Specify voltage for thermal coupler

661



dimensions 661					
	D	CO	H	L	W
6"	7-1/8"	6-13/16"	2-5/8"	14-1/16"	10-5/8"

665



dimensions 665				
	CO	H	L	W
6"	6-5/8"	4"	15-7/8"	10-5/8"

665

Tentec LED Downlight round



- **Bridgelux VERO™ High Performance LED**
- **SDCM: 3**
- **CRI: 80**
- **6" Square or Round**
- **Economical, budget smart**
- **Low profile bayonet trim**

αbet LED

Precision Lens Directional Downlight

αbet is an all-in-one downlight solution. Its precision, camera-like, focusing lens allows for beam changes with a simple turn. 24° to 40° or 35° to 60° beam variable units are offered. αbet is also fully adjustable in rotation and tilt to 1° increments. It is offered with Chroma technology for an SDCM of 2. Alternative LED modules may be specified. αbet has the most efficient heat sink design allowing the least amount of material used while pulling heat from the LED source.

For further specification information, consult factory.

Housing

Recessed housing of modular construction consists of ceiling fitting plate assembly with integral junction box from 16-gauge steel, integral driver, and quick connect whip. Can be installed independent of lamp socket housing module to allow finishing / closing of ceiling construction. 27" long steel mtg. bars (MB27) are supplied as standard.

3-Point Mounting System

Patented 3-point bayonet latch mounting system consists of trim ring and mounting ring with adjustable throat to accommodate up to a 2" ceiling thickness. Mounting ring incorporates integral yoke and field disconnect compartment for easy assembly.

Electrical

Electronic multi-voltage (120V or 277V driver). Replaceable LED module with quick disconnects. Extruded aluminum heat sink. Junction box listed for (8) eight #12 AWG 90° C conductors and feed through wiring. Dimming must be specified 120V/277V, 3-wire Hi-Lume control and EcoSystem control from Lutron, or Mark 7, 0-10V, from Advance.

Listings

ETLus Listed to UL1598 (Type Non-IC, suitable for dry and damp locations)
cETL Listed to CSA C22.2 #250.0

 Chroma LM-79

- Precision lens technology for 24-40 and 35-60, with focus for stepless adjustment
- Stable housing design, made of Aluminum die-cast and UV resistant composite
- Minimized trim ring of only 2mm for trimless installation appearance in the ceiling
- Standard trim color is white with optional RAL colors and chrome.
- IP44 optional optic with flush appearance made possible by the flexible reflector positioning
- Round or square, with or without trim offered



Product: 640 - abet LED Directional Downlight

Coming Q1 2014





670 LED Linear Pendant & Track

The 670 Linear LED Pendant is a high performance, line voltage, LED linear fixture. It is offered in two or four ft lengths. 670 has an onboard dimming driver as well as the option for an integrated daylight harvesting system by Wattstopper. Advanced individual optics for each emitter enhances the fixture efficiency delivering over 1300lm per foot. 3000K or 4000K is offered with matte silver aluminum housing finish. Ideal for general lighting applications where 54w T5HO pendant would be used. 670 can be either pendant mounted or track mounted on WILA 700 or 710 series track. See track options on the cut sheet at WilaLighting.com. Pendant options shown below.

Controls in commercial applications are crucial to sustainable lighting design. The 670 Linear LED pendant fulfills the LEED® requirements for controls with the use of individual integrated Daylight harvesting sensor and drivers without the need for extensive wiring installation or expensive commissioning. The most efficient and advanced LEDs are used for the best color consistency and a SDCM of only 3

Listings

ETLus Listed to UL1598 and 1574 (suitable for dry and damp locations)
 cETL Listed to CSA C22.2 #250.0 and #9.0
 Made in the USA - meets the requirements of the Buy American provision within the ARRA.



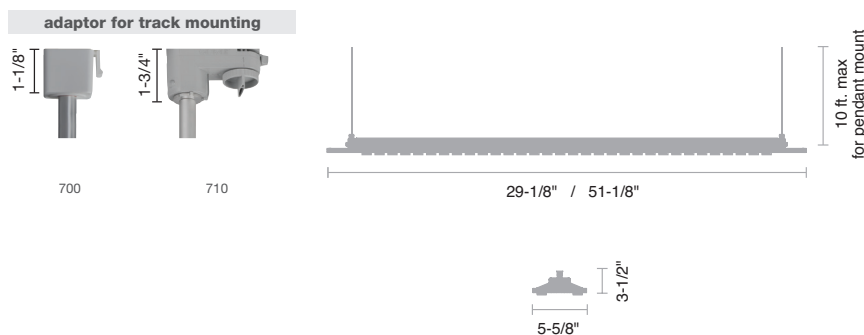
Ordering Code

Follow the steps to specify your luminaire.

example: 670 - 042 - 85 - DH

① series	② color temperature	③ length	④ CRI	④ options	⑥ adaptor option
670	03 3000K 04 4000K	2 2 ft. 4 4 ft.	85 85 CRI	D Dimming DH Day Light Harvesting* K20202-010WH Versatile Mounting Kit, 10' ** K20203-010WH Direct J-Box Mounting Kit, 10' ** K20204-010WH T-Grid Ceiling Mounting Kit, 10'***	700BK ECO/Halo black 700MC ECO/Halo matte silver 700WH ECO/Halo white 710BK GEO black 710MC GEO matte silver 710WH GEO white

Notes:
 standard cable length 10 ft. field adjustable
 *DH Day Light Harvesting in 120V only
 **mounting kit not applicable for track mount



- 2' or 4' LED Linear
- Low profile design
- Pendant or line voltage track mounting
- Self Commissioning Daylight Harvesting available
- Individual sensor on each fixture with daylight harvesting
- Eliminates dark areas that full DH systems cause
- Continuously selects and displays on/off set points eliminating complex set up calibrations and installation costs
- Fully automatic calibration



Product: 670 - Linear LED Pendant

730 Spot

The 730 LED performance spots are made for canopy or track applications. They provide energy efficient light using a cold remote phosphor module by XICATO® for perfect fixture-to-fixture color consistency (SDCM:2) and superior reliability (L85:50k hrs). They are adjustable for 359 degree rotation and 100 degree tilt.

730 series spots have an integral dimming driver for mid to lower lumen packages and a driver in the extended canopy or remote box at the track for higher lumen packages. They allow multiple reflector and lens accessory options. Field cuttable stem extension options are offered for ceiling mount up to 28". The canopy covers any standard 4" J-Box. Offered in black, matte silver and white 730 spots are available for WILA line voltage 1 or 2 circuit track mounting. See page 23 and 25 for track options. Detailed technical information available on the cut sheet on the website.

Vibrant XICATO® XSM LED for rich color saturation with an SDCM of 2, without sacrificing efficacy. Go to WilaLighting.com for vibrancy series specification details.

Follow the steps to specify your luminaire.

example: **730 - 433 - 420 - 40 - 95 - MC**

① series	② catalog#			③ shade	④ reflector code	⑤ CRI code	⑥ finish	⑦ snoot*
730	a lumen	b housing	c color temperature	401 glass*	20 20°	80 80 CRI	BK black	S1 flush
	4 700lm*	2 2"	2 2700K	411 flared*	40 40°	95 95 CRI*	MC matte silver	S2 flare
	5 1000lm**	3 3"	3 3000K	416 snoot*	60 60°	V vibrant**	WH white	S3 extended
	6 1500lm†	4 4"	9 3500K	420 **	BL blue*			BD barn doors
	7 2200lm‡		4 4000K	422 with glass**	WH white*			
	8 3000lm‡							
	9 4000lm‡							

Notes:

4000lm available Q1 2014

*700lm available for 2" and 3" (on board driver) only

**1000lm available for 3" and 4" (on board driver) only

†1500lm available for 4" (on board driver) only

‡2200lm, 3000lm and 4000lm for 4" (driver in canopy) only

Notes:

*for 2" aperture only

**for 3" aperture only

Notes:

*for 3" aperture (422 shade) only

Notes:

*700lm, 1000lm, 1500lm and 2000lm available only

**for 2200lm and 3000lm

Notes:

*for 4" aperture only

⑧ adaptor option	adaptor for track mounting
<p>700BK ECO/Halo black*</p> <p>700MC ECO/Halo matte silver*</p> <p>700WH ECO/Halo white*</p> <p>710BK GEO black**</p> <p>710MC GEO matte silver**</p> <p>710WH GEO white**</p>	<p>700 710 710 (high lumen)</p>

Notes:

*2" aperture only compatible with 700 adaptor

**4" (driver in canopy) only compatible with 710 adaptor

2"	3" on board driver	3" glass on board driver	4" on board driver	4" driver in canopy
<p>H</p> <p>6"</p> <p>18"</p> <p>36"</p> <p>Notes: length may be specified in 1" increments</p>	<p>H</p> <p>5"</p> <p>6" - 28"</p> <p>Notes: length may be specified in 1" increments</p>	<p>H</p> <p>5"</p> <p>6" - 28"</p> <p>Notes: length may be specified in 1" increments</p>	<p>H</p> <p>5-1/8"</p> <p>6" - 28-1/4"</p> <p>Notes: length may be specified in 1" increments</p>	<p>H</p> <p>5-1/4" - 30"</p> <p>Notes: length may be specified in 1" increments</p>
<p>401 glass 4-1/2"</p> <p>2-1/8" 4-1/2" 4-5/8"</p> <p>411 flared 2-1/8" 3" 3-7/8"</p> <p>416 snoot 2-1/8" 2-1/2" 4"</p>	<p>4-1/2" 5-1/8" 3-1/8"</p>	<p>4-1/2" 7-7/8" 5"</p>	<p>4-1/2" 6-3/8" 5-1/4"</p>	<p>7-1/8" 2-1/4" 5-1/4"</p>

Housing

Machined aluminum housing with white, matte silver or black finish. Electrical components mounted in the housing for mid to lower lumen packages. Higher lumen packages have driver compartment canopy at ceiling.

Electrical

Electronic multi-voltage (120 or 277V driver). Extruded aluminum heat sink. 3" P680 & 4" RP680 (1500 lum) include integral dimming driver (Reverse Phase Dimming, ELV, Trailing Edge). 3" available in 120V only. 4" P680 & RP680 (2200 lum/3000 lum) available in dimming (3-wire Hi-Lume control and EcoSystem control from Lutron; Mark 7, 0-10V from Advance)

Listings

ETLus Listed to UL1598 (suitable for dry and damp locations)

ETLus Listed to UL1574 (suitable for dry locations only)

cETL Listed to CSA C22.2 #250.0 and #9.0

Made in the USA - meets the requirements of the Buy American provision within the ARRA



730

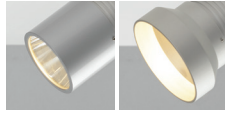
3" Canopy in white (on board driver)
on 710 track



730
 2" matte silver, track version
 with glass shade

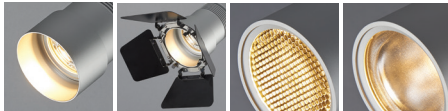
730
 4" Canopy
 shown with flared snoot (S2) in black
 up to 1500 lumens (on board driver)

2" snoot



snoot flared

3" snoot & accessories



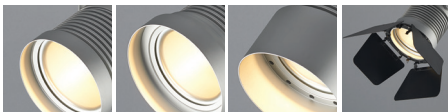
snoot barn doors louver linear, diffuser,
 frosted lens

snoot & lens accessories

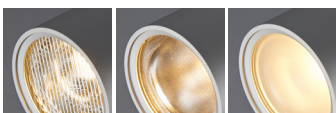
- 900300bk black, snoot*
- 900300mc matte silver, snoot*
- 900300wh white, snoot*
- 900305blk barn doors*
- 900310 louver*
- 900320 linear*
- 900321 diffuser*
- 900322 frosted*
- 900330 linear**
- 900331 diffuser**
- 900332 frosted**

Notes:
 *for 3" aperture only, lens accessories can not be
 used when using barn doors (900305)
 **for 4" aperture only, can not be used when using
 barn doors (bd)

4" snoot & accessories



flush (S1) flared (S2) extended (S3) barn doors (BD)



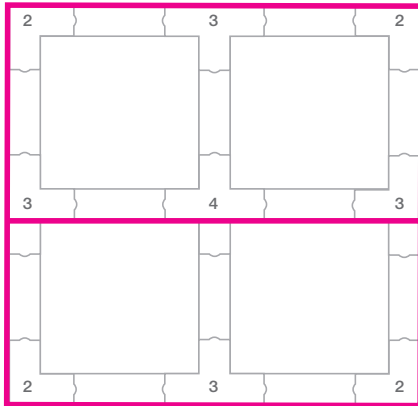
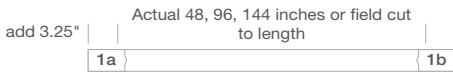
linear diffuser frosted

730
 4" Canopy
 shown with flared snoot (S2) in matte silver
 up to 3000 lumens (driver in canopy)

700 Track

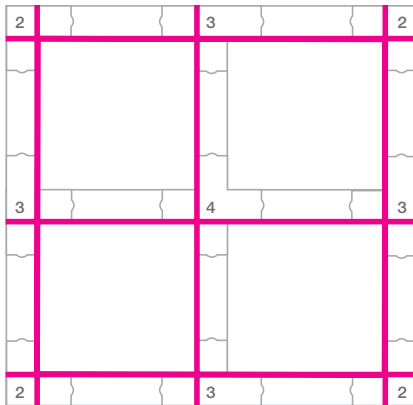
700 Track is a 1 circuit, 20A rated, line voltage track system. Its lightweight, compact low profile design is easy to install saving on overall project costs. The track is a 120v 1-circuit system with 1 neutral. The rail is constructed of extruded aluminum section and the live circuit and neutral conductors are made of heavy gauge copper. 700 Track can be surface mounted, on drop rods or wire pendant suspension. Offered in black, matte silver or white. End caps are included with each piece of track. Line Voltage decorative pendants are compatible with WILA Track. Visit BruckLighting.com for hundreds of additional decorative pendant options.

- Pre-punched with fastening holes for easy install
- Tracks are field cuttable
- Factory Bendable to 7' minimum radius
- Offered with an array of high performance spots and Bruck Lighting pendant fixtures
- Fixtures include Bruck Lighting HID, Par, Halogen, CFL
- WILA compatible fixtures include:
 - WILA 730 series LED Heads (see page 21)
 - WILA 680 LEDbay pendants (see page 13)
 - WILA 670 Series Linear LED (see page 19)



product key

- 1a live end feed
- 1b live end feed, mirror
- 2 adjustable L-Connector
- 3 T-Connector
- 4 X-Connector



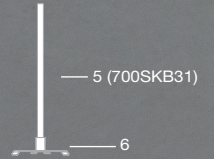
magenta line indicates polarity



threaded supports

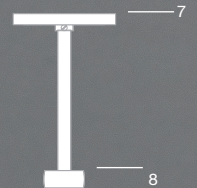
- 5 threaded rod, 700SKB31
- 6 threaded rod mounting clip

note: mounting for threaded rod provided by others



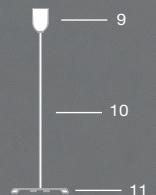
stem supports

- 7 stem canopy kit
- 8a end feed stem suspension point
- 8b universal stem suspension point



cable supports

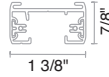
- 9 ceiling cup
- 10 suspension wire
- 11 cable suspension clip



track

minimum 7 ft radius for factory bent track, add bk for black, sv for matte silver, or wh for white finish

- 700GES204 4 ft
- 700GES204-1 4 ft factory bent
- 700GES208 8 ft
- 700GES208-1 8 ft factory bent
- 700GES212 12 ft
- 700GES212-1 12 ft factory bent



live end feed

includes: 1 end cap (700GES41), add bk for black, sv for matte silver, or wh for white finish

- 700GES11 live end feed
- 700GES12 live end feed, mirror



adjustable L-connector

includes: 2 end caps (700GES41), add bk for black, sv for matte silver, or wh for white finish

- 700GES34 adjustable L-connector



T-connector

includes: 3 end caps (700GES41), add bk for black, sv for matte silver, or wh for white finish

- 700GES40 T-connector



X-connector

includes: 4 end caps (700GES41), add bk for black, sv for matte silver, or wh for white finish

- 700GES38 X-connector



flexible connector

add bk for black or wh for white finish

- 700GES23 flexible connector



end cap

add bk for black, sv for matte silver, or wh for white finish

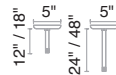
- 700GES41 end cap



stem and canopy kit

add bk for black or wh for white finish

- 700GEA37/12 12 in
- 700GEA37/18 18 in
- 700GEA37/24 24 in
- 700GEA37/48 48 in



universal stem suspension point

used with stem and canopy kit, see page 23, add bk for black or wh for white finish

- 700GEA10 universal stem suspension point



end feed stem suspension point

used with stem and canopy kit, see page 23, add bk for black or wh for white finish

- 700GEA11 end feed stem suspension point



ceiling cup

add bk for black or wh for white finish

- 700SKB30 ceiling cup
- 700SKB34 suspension wire, 5 ft
- 700SKB34/3m suspension wire, 9 ft



cable suspension clip

used with ceiling cup and suspension wire, see page 23

- 700GEA12 cable suspension clip



threaded rod mounting clip

rod provided by WILA or others, see page 23

- 700GEA6 threaded rod mounting clip 1/4"-20
- 700SKB31 threaded rod, 6 ft, 1/4"-20



T-bar clip

add bk for black, sv for matte silver, or wh for white finish

- 700GEA7 T-bar clip



straight feed connector

add bk for black, sv for matte silver, or wh for white finish

- 700GES14 straight feed connector



conduit continuation kit

add bk for black, sv for matte silver, or wh for white finish

- 700GES1316 conduit continuation kit



conduit end feed

add bk for black, sv for matte silver, or wh for white finish

- 700GES13 conduit end feed
- 700GES16 conduit end feed, mirror



linear coupler

add bk for black, sv for matte silver, or wh for white finish

- 700GES21 linear coupler



T-bar feed kit

add bk for black or wh for white finish

- 700GES17 T-bar feed kit



floating feed

add bk for black or wh for white finish

- 700GES67 floating feed



circuit breaker CB11 / CB12

add bk for black, sv for matte silver, or wh for white finish

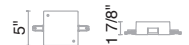
- 700GES11cb circuit breaker
- 700GES12cb circuit breaker, mirror



circuit breaker CB14

add bk for black, sv for matte silver, or wh for white finish

- 700GES14cb circuit breaker



circuit breaker

This power feed circuit breaker limits the allowable electric load that can be put on the circuit.

Add the appropriate ordering code extension to the current limiter circuit breaker part number.

example: 700GES12cb - wh - 050 for circuit breaker cb12 feed, white finish, with 5 amp circuit breaker.

- /010 1 amp circuit breaker
- /020 2 amp circuit breaker
- /030 3 amp circuit breaker
- /050 5 amp circuit breaker
- /070 7 amp circuit breaker
- /100 10 amp circuit breaker
- /120 12 amp circuit breaker

outlet box cover

add bk for black, sv for matte silver, or wh for white finish

- 700GES15 outlet box cover



monopoint

add bk for black, sv for matte silver, or wh for white finish

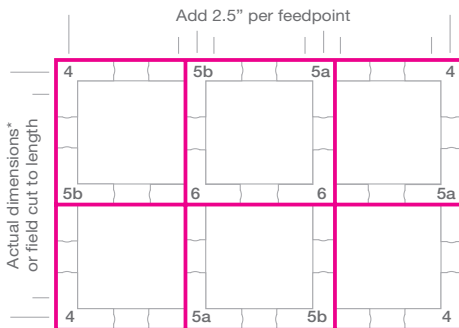
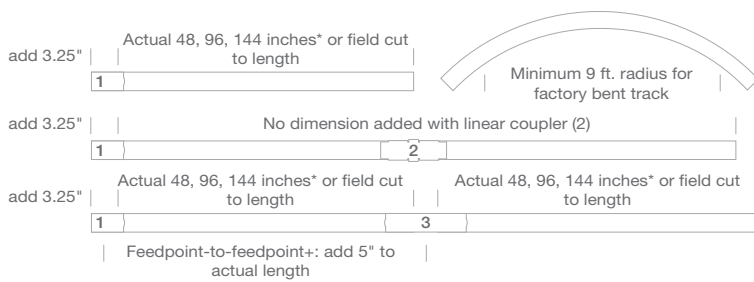
- 700GES70 monopoint



710 Track

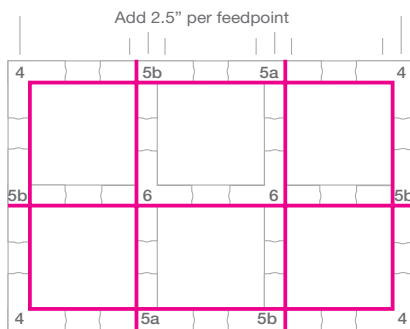
710 Track is a 2 circuit, 20A rated, line voltage track system. It is of durable construction and is easy to install, saving on overall project costs. The track is a 120v 2-circuit system with 2 neutral. The rail is constructed of extruded aluminum section, and the live circuit and neutral conductors are made of heavy gauge copper. 710 Track can be surface mounted, recessed, suspended on drop rods or wire pendant suspension. Offered in black, matte silver or white. End caps are included with each piece of track. Line Voltage decorative pendants are compatible with WILA Track. Visit BruckLighting.com for hundreds of additional decorative pendant options.

- Offered with an array of high performance spots and Bruck Lighting pendant fixtures
- Fixtures include Bruck Lighting HID, Par, Halogen, CFL
- WILA compatible fixtures include:
 - WILA 730 series LED Heads (see page 21)
 - WILA 680 LEDbay pendants (see page 13)
 - WILA 670 Series Linear LED (see page 19)



product key

- 1 Live End Feed
- 2 Linear Coupler
- 3 Live Center Feed
- 4 Feedable L-Connector Adjustable
- 5a Feedable T-Connector
- 5b Feedable T-Connector Mirror
- 6 Feedable X-Connector



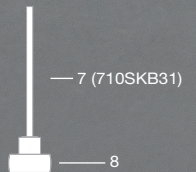
710 track is polarized and is manufactured with identifying ridge (magenta on diagrams). Refer to these diagrams to ensure proper connector selection.



threaded supports

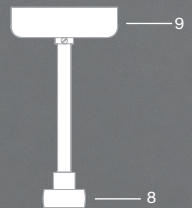
- 7 threaded rod, 710SKB31
- 8a universal stem suspension point
- 8b end feed stem suspension point
- 8c center feed stem suspension point
- 8d L-connector stem suspension point
- 8f T-connector stem suspension point
- 8g X-connector stem suspension point

note: mounting for threaded rod provided by others



stem supports

- 9 stem canopy kit
- 8a universal stem suspension point
- 8b end feed stem suspension point
- 8c center feed stem suspension point
- 8d L-connector stem suspension point
- 8f T-connector stem suspension point
- 8g X-connector stem suspension point



cable supports

- 10 ceiling cup
- 11 suspension wire
- 12 ceiling clamp



track

minimum 9 ft radius for factory bent track, add bk for black, sv for matte silver, or wh for white finish

- 710TEK44 4 ft
- 710TEK44-1 4 ft factory bent
- 710TEK48 8 ft
- 710TEK48-1 8 ft factory bent
- 710TEK412 12 ft
- 710TEK412-1 12 ft factory bent



recessed jacket

use with straight 710 track. add bk for black, sv for matte silver, or wh for white finish

- 710FTP44 4 ft
- 710FTP48 8 ft
- 710FTP412 12 ft



live end feed

add bk for black, sv for matte silver, or wh for white finish

- 710TEK11 live end feed
- 710TEK12 live end feed, mirror



linear coupler

add bk for black, sv for matte silver, or wh for white finish

- 710TEK21 linear coupler



live center feed

add bk for black, sv for matte silver, or wh for white finish

- 710TEK14 live center feed



feedable L-connector adjustable

add bk for black, sv for matte silver, or wh for white finish

- 710TEK34 feedable L-connector adjustable



feedable T-connector

add bk for black, sv for matte silver, or wh for white finish

- 710TEK39 feedable T-connector, right
- 710TEK40 feedable T-connector, left



feedable X-connector

add bk for black, sv for matte silver, or wh for white finish

- 710TEK38 feedable X-connector



adjustable connector

add bk for black, sv for matte silver, or wh for white finish

- 710TEK24 adjustable connector



end cap

add bk for black, sv for matte silver, or wh for white finish

- 710TEK41 end cap



recessed end cap

- 710FTP41 recessed end cap



conductor tool

- 710ZTSV12 conductor tool

ceiling clamps

add bk for black, sv for matte silver, or wh for white finish, *available in bk and wh only

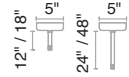
- 710SKB12 ceiling clamp
- 710SKBT12* T-bar ceiling clamp
- 710SKBX12* Recessed T-bar ceiling clamp



stem and canopy kit

3/8" IP stem, add bk for black or wh for white finish

- 710SPUS12 12 in
- 710SPUS18 18 in
- 710SPUS24 24 in
- 710SPUS48 48 in



universal stem suspension point

3/8" IP stem or 1/4"-20 threaded rod, see page 25, add bk for black or wh for white finish

- 710SP4P universal stem suspension point



end feed stem suspension point

3/8" IP stem or 1/4"-20 threaded rod, see page 25, add bk for black or wh for white finish

- 710SP4E end feed stem suspension point



center feed stem suspension point

3/8" IP stem or 1/4"-20 threaded rod, see page 25, add bk for black or wh for white finish

- 710SP4I center feed stem suspension point



L-connector stem suspension point

3/8" IP stem or 1/4"-20 threaded rod, see page 25, add bk for black or wh for white finish

- 710SP4L L-connector stem suspension point



T-connector stem suspension point

3/8" IP stem or 1/4"-20 threaded rod, see page 25, add bk for black or wh for white finish

- 710SP4T T-connector stem suspension point



X-connector stem suspension point

3/8" IP stem or 1/4"-20 threaded rod, see page 25, add bk for black or wh for white finish

- 710SP4X X-connector stem suspension point



ceiling cup

used with ceiling clamp, see page 25, add bk for black or wh for white finish

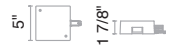
- 710SKB30 ceiling cup
- 710SKB34 suspension wire, 5 ft
- 710SKB34/3m suspension wire, 9 ft



circuit breaker CB11 / CB12

add bk for black, sv for matte silver, or wh for white finish

- 710TEK11cb circuit breaker
- 710TEK12cb circuit breaker, mirror



circuit breaker

This power feed circuit breaker limits the allowable electric load that can be put on the circuit.

Add the appropriate ordering code extension to the current limiter circuit breaker part number.

example: 710TEK11cb - sv - 030 for circuit breaker cb11 feed, matte silver finish, with 3 amp circuit breaker.

- /010 1 amp circuit breaker
- /020 2 amp circuit breaker
- /030 3 amp circuit breaker
- /050 5 amp circuit breaker
- /070 7 amp circuit breaker
- /100 10 amp circuit breaker
- /120 12 amp circuit breaker

outlet box cover

add bk for black, sv for matte silver, or wh for white finish

- 710GES15 outlet box cover



635 LED Marker

Surface Mount Marker

The 635 LED surface mount marker light with Chroma technology provides energy efficient light using a cold remote phosphor module by XICATO® for perfect fixture-to-fixture color consistency (SDCM:2) and superior reliability (L85:50k hrs). Outdoor rated.

635 is made of a hard anodized aluminum housing and offered with either a 4" canopy for install over a standard j-box or without for a cleaner semi-recessed installation. It has a 3/8" thick tempered borosilicate glass dome for even, consistent illumination. 635 is provided with an integral driver which exists in the J-Box. 635 is ETL rated for outdoor installations.

Listings

ETLus Listed to UL1598 (suitable for wet locations)
 cETL Listed to CSA C22.2 #250.0

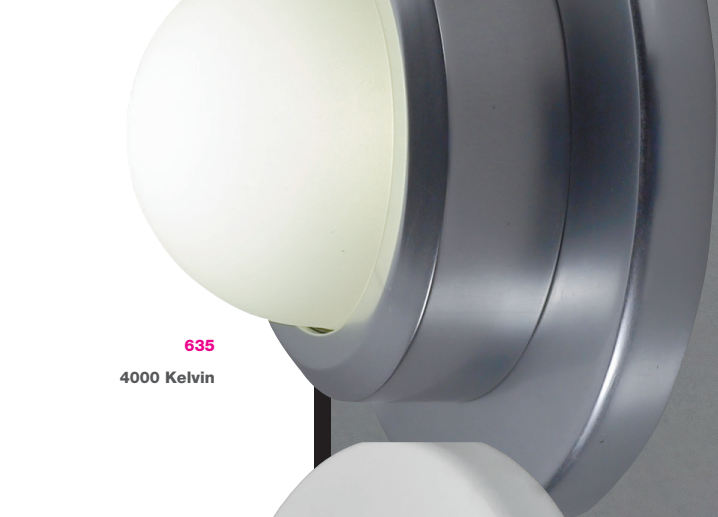
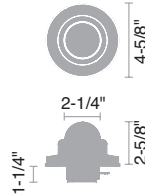


Ordering Code

Follow the steps to specify your luminaire.

example: **635 - 343-1 - MC**

① series	② color temperature	③ finish
635	343-1 3000K, 400lm 344-1 4000K, 400lm	MC matte silver WH white



636 LED Marker

Surface Mount Marker

The 636 LED surface mount marker light with Chroma technology provides energy efficient light using a cold remote phosphor module by XICATO® for perfect fixture-to-fixture color consistency (SDCM:2) and superior reliability (L85:50k hrs). Outdoor rated.

636 is made of a hard anodized aluminum housing for install over a standard j-box . It has a 3/8" thick tempered borosilicate glass dome for even, consistent illumination. 636 is provided with an integral driver which is mounted to the mounting plate and exists in the J-Box. 636 is ETL rated for indoor or outdoor installations.

Listings

ETLus Listed to UL1598 (suitable for wet locations)
 cETL Listed to CSA C22.2 #250.0

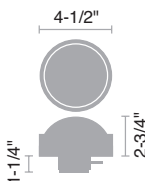


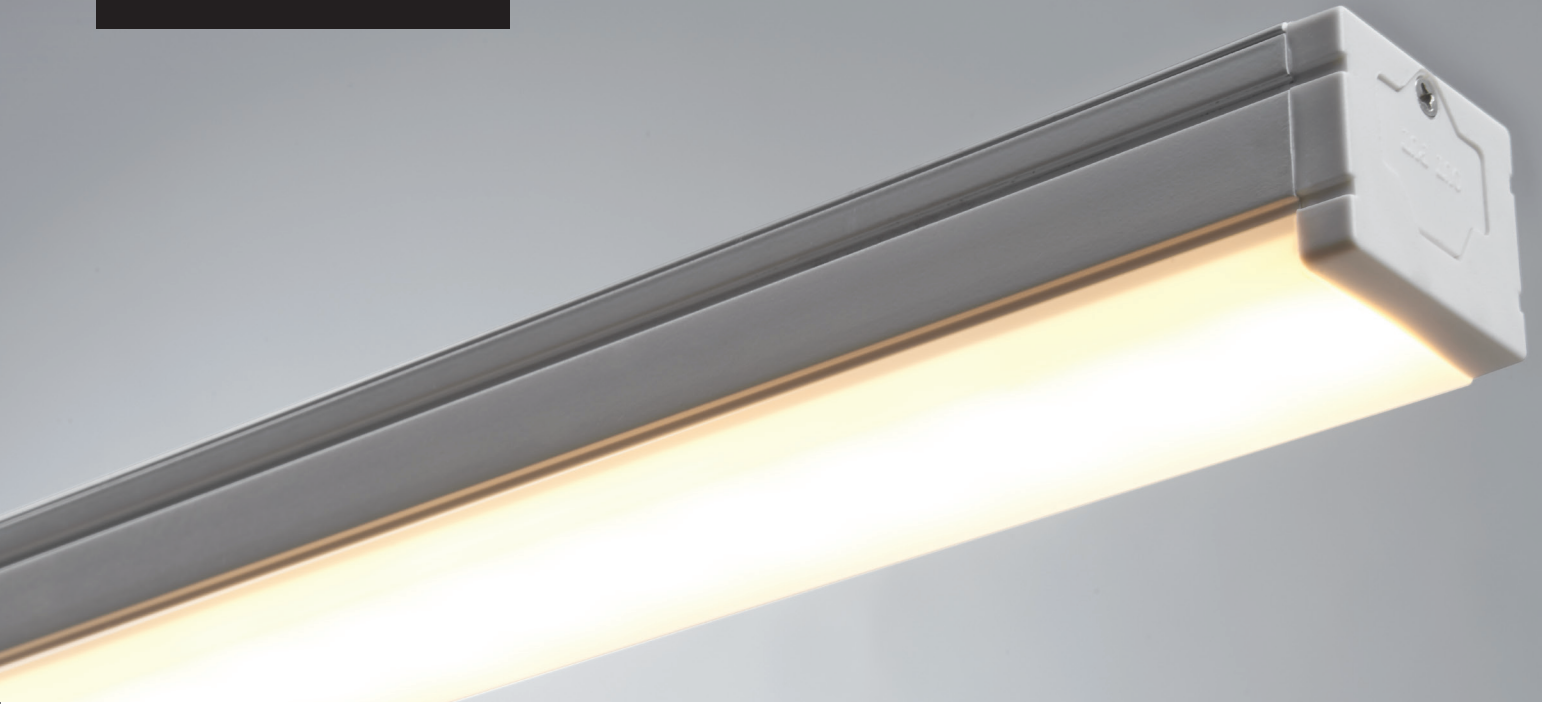
Ordering Code

Follow the steps to specify your luminaire.

example: **636 - 444-1 - WH**

① series	② color temperature	③ finish
636	343-1 3000K, 400lm 344-1 4000K, 400lm 443-1 3000K, 700lm 444-1 4000K, 700lm	MC matte silver WH white





640 Cove LED

640 LED linear is a low profile, linear, line voltage, LED cove fixture with an aluminum extrusion housing. It has highly efficient, color consistent LEDs with an SDCM of 3. An opal lens allows for a smooth and even illumination eliminating pixelation and striations on the wall. The 640 is fully dimmable to 1%. It has a 120° spread and rivals fluorescent T8 strips output with an impressive 500 delivered lumens per foot for only 8 watts with 3000K and 4000K CCT options offered.

Listings

ETLus Listed to UL1598 and 153 (suitable for dry locations only)
 cETL Listed to CSA C22.2 #9.0



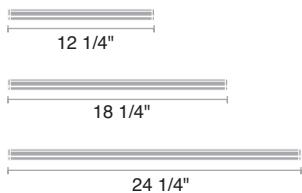
made in the USA

Ordering Code

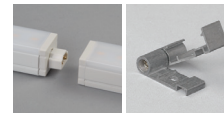
Follow the steps to specify your luminaire.

example: 640 - 553-1 - WH

① series	② length	③ finish	accessories
640	333-1 12", 3000K 334-1 12", 4000K 443-1 18", 3000K 444-1 18", 4000K 553-1 24", 3000K 554-1 24", 4000K	WH white	138521WH 6" flexible 138522WH 12" flexible 138523WH 24" flexible 138524WH 72" flexible 138526WH 72" power feed 138527WH 72" plug-in power feed 138528WH switch box



Included Accessories



end-to-end connector

premium adjustable mounting clips

Optional Accessories

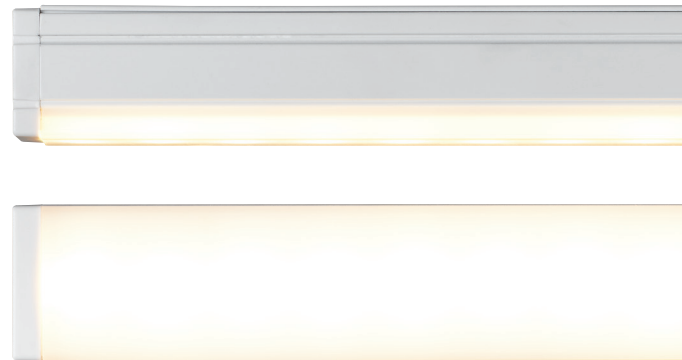


6", 12", 24", 72" flexible cable connector

72" power feed

72" plug in power feed

switch box



LiteOptics™

- Twist and lock bayonet
- Trim Ring: white, chrome, matte silver

Apertures: Round 3", 4", 5", 6"

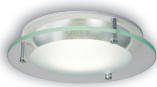


DFS - Diffusing Screen
Series: 608, 621, 665

Apertures: Round 4", 5", 6"



CCO - Central Etched Cone
Series: 608, 621, 665



CFS - Central Etched Float Glass
Series: 608, 621, 665



ETR - Etched Tapered Ring
Series: 608, 621, 665



GKW - Glass Cone White
Series: 608, 621, 665



POB - Pupil Optic Blue
Series: 608, 621, 665



POW - Pupil Optic White
Series: 608, 621, 665



CRO - Corona Ring
Series: 608, 621, 665

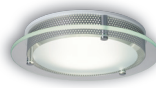


CCS - Clear Disk
Series: 608, 621, 665

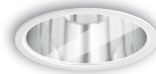
Apertures: Round 4", 5", 6"



CDS - Soft Disk
Series: 608, 621, 665



CFP - Central Etched Float
Glass Perforated
Series: 608, 621, 665



CGS - Clear Glass
Series: 608, 621, 665



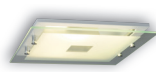
OCR - Opal Cover
Series: 608, 621, 665



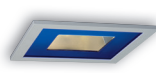
POP - Pupil Optic Perforated
Series: 608, 621, 665



TDFS - Diffusing Screen
Series: 661



TCFS - Central Etched
Float Glass
Series: 661

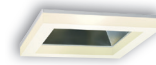


TPOB - Pupil Optic Blue
Series: 661



TPOW - Pupil Optic White
Series: 661

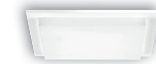
Apertures: Square 6"



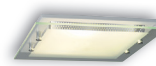
TCRO - Corona Ring
Series: 661



TCCS - Clear Carre
Series: 661



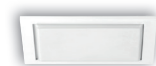
TCDS - Soft Carre
Series: 661



TCFP - Central Etched Float
Glass Perforated
Series: 661



TCGS - Clear Glass
Series: 661



TOCS - Opal Cover
Series: 661

Apertures: Square 6"

WILA QuikShip

Project schedules are crucial. Your reputation is crucial. Quality at a fair price is crucial. WILA offers you peace of mind with our most popular LED fixtures made here in the USA. Stay competitive and flexible with the WILA QuikShip program. A 2-5 production day lead time allows for stress free projects. QuikShip products are below. Call WILA customer service today for more information or to place an order. It's quick and simple.

QuikShip items must be on Separate Purchase Order clearly marked QuikShip. Additional or alternative products may be entered, must be approved, if inventory allows.

- 608 LED Cylinders up to 50 units
- 621 LED Recessed Downlight up to 100 units
- QuikShip orders must be received before 10am PST for that day to be included. After 10am, shipping will be based on the following business day as first day.
- QuikShip orders adhere to all standard WILA terms and conditions.
- Change order of any type may re-set lead time, although our efforts will be to ship on time.



621 LED Downlight
Diffusing screen LiteOptic™



S608 LED Downlight
Open trim

Also offered for QuikShip

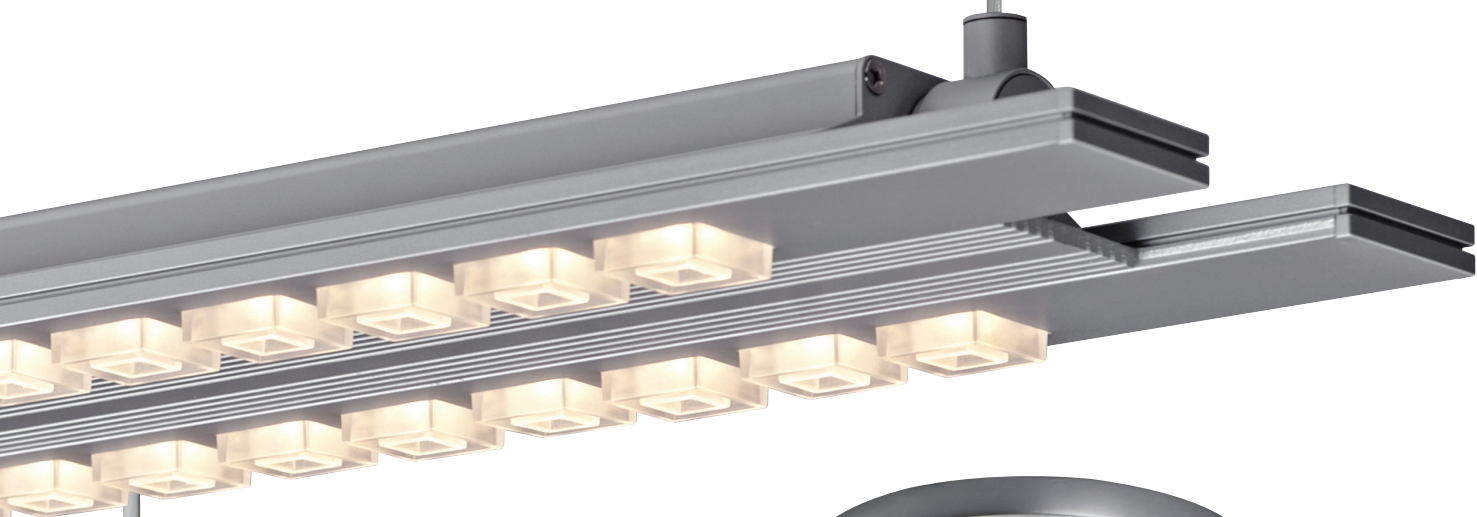
- 700 Line Voltage Track - Now Available see pg. 23
- 710 Line Voltage Track - Now Available see pg. 25
- 730 3" Spot – Now Available see pg. 21
- 661 Tentec Square - Q1 2014 see pg. 15
- 665 Tentec Round - Q1 2014 see pg. 15
- 347v - Q1 2014

example:	catalog#	reflector	beam	voltage	driver	LiteOptic™
	621 - 543	SA	60	120	BDIM	DFSA

catalog #	lumen	aperture	kelvin	reflector finish	beam spread	voltage	driver	LiteOptic™
621 - 543	1000lm	4"	3000K	SA specular DA diffuse	20 20° 40 40° 60 60°	120 120V 277 277V	blank non dimming BDIM 0-10v dimming	blank open trim DFS4 4", diffuse
621 - 549			3500K					
621 - 743	2200lm	3000K						
621 - 749		3500K						
621 - 563	1000lm	6"	3000K					
621 - 569			3500K					
621 - 763	2200lm	3000K						
621 - 769		3500K						
621 - 863	3000lm	3000K						
621 - 869		3500K						
								blank open trim DFS6 6", diffuse

example:	series	catalog#	reflector	beam	finish	voltage	driver	LiteOptic™
	S608	669	SA	40	WH	277	BDIM	DFSA

series	catalog #	lumen	aperture	kelvin	reflector finish	beam spread	finish	voltage	driver	LiteOptic™
S608 P608 RP608	563	1000lm	6"	3000K	SA specular DA diffuse	20 20° 40 40° 60 60° 80 80°	WH white	120 120V 277 277V	blank non dimming BDIM 0-10v dimming	blank open trim DFS6 6", diffuse
	569			3500K						
	663	1500lm		3000K						
	669			3500K						
	763	2200lm		3000K						
	769			3500K						
	863	3000lm		3000K						
	869			3500K						



WILA Lighting

15774 Gateway Circle

Tustin, CA 92780

P 714.259.0990

F 714.259.0980

WilaLighting.com

2013 / 14

